

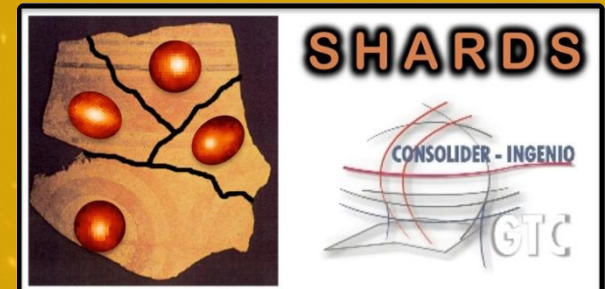
# A new populations of bright massive galaxies at $z > 3$

Belén Alcalde Pampliega

Pablo G. Pérez-González, G. Barro, H. Domínguez Sanchez, Carmen Eliche-Moral & P. Esquej



Dpto. Física de la Tierra,  
Astronomía y Astrofísica II  
2<sup>nd</sup> SHARDS Team Meeting

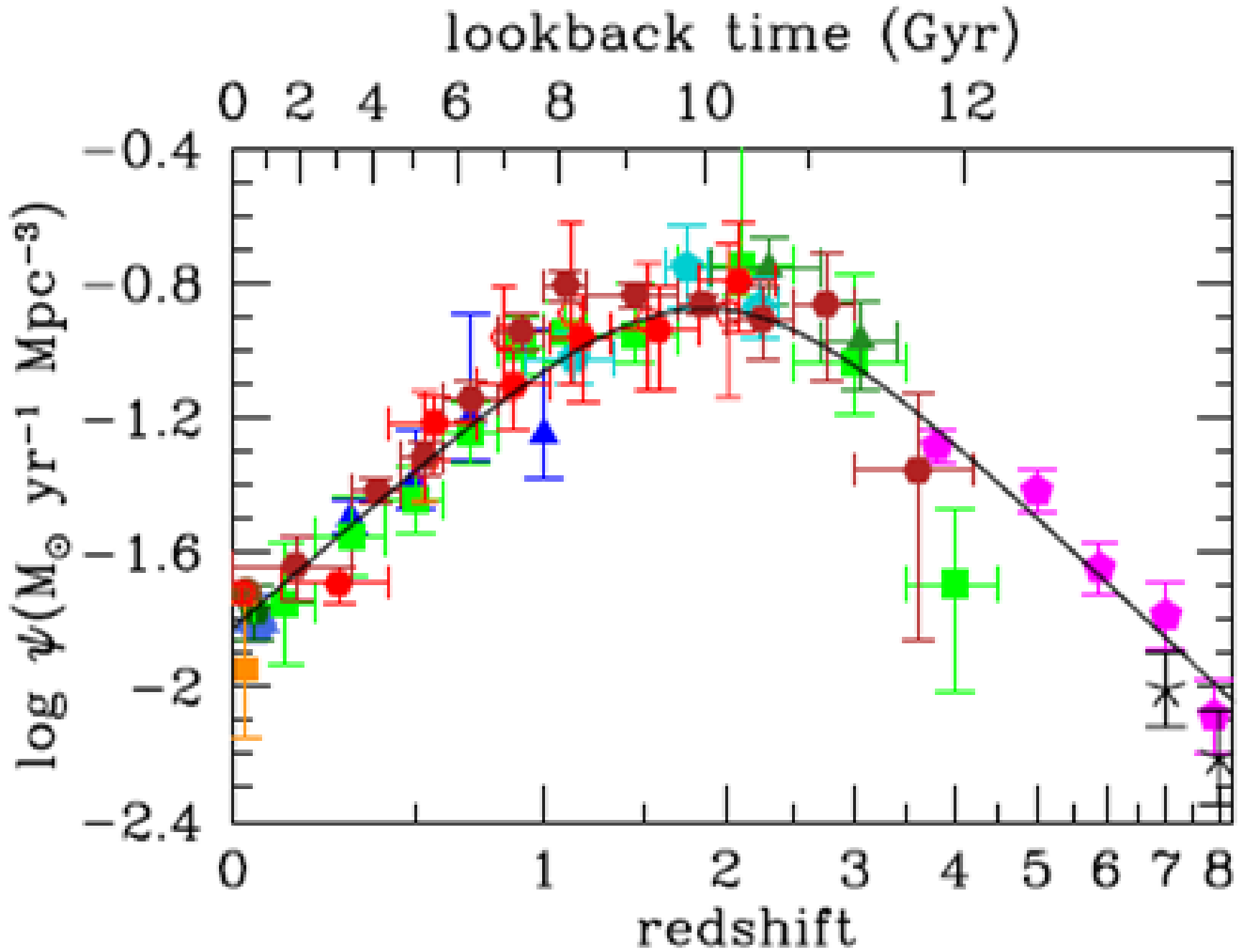


May 13-14, 2015

# Our neighborhood

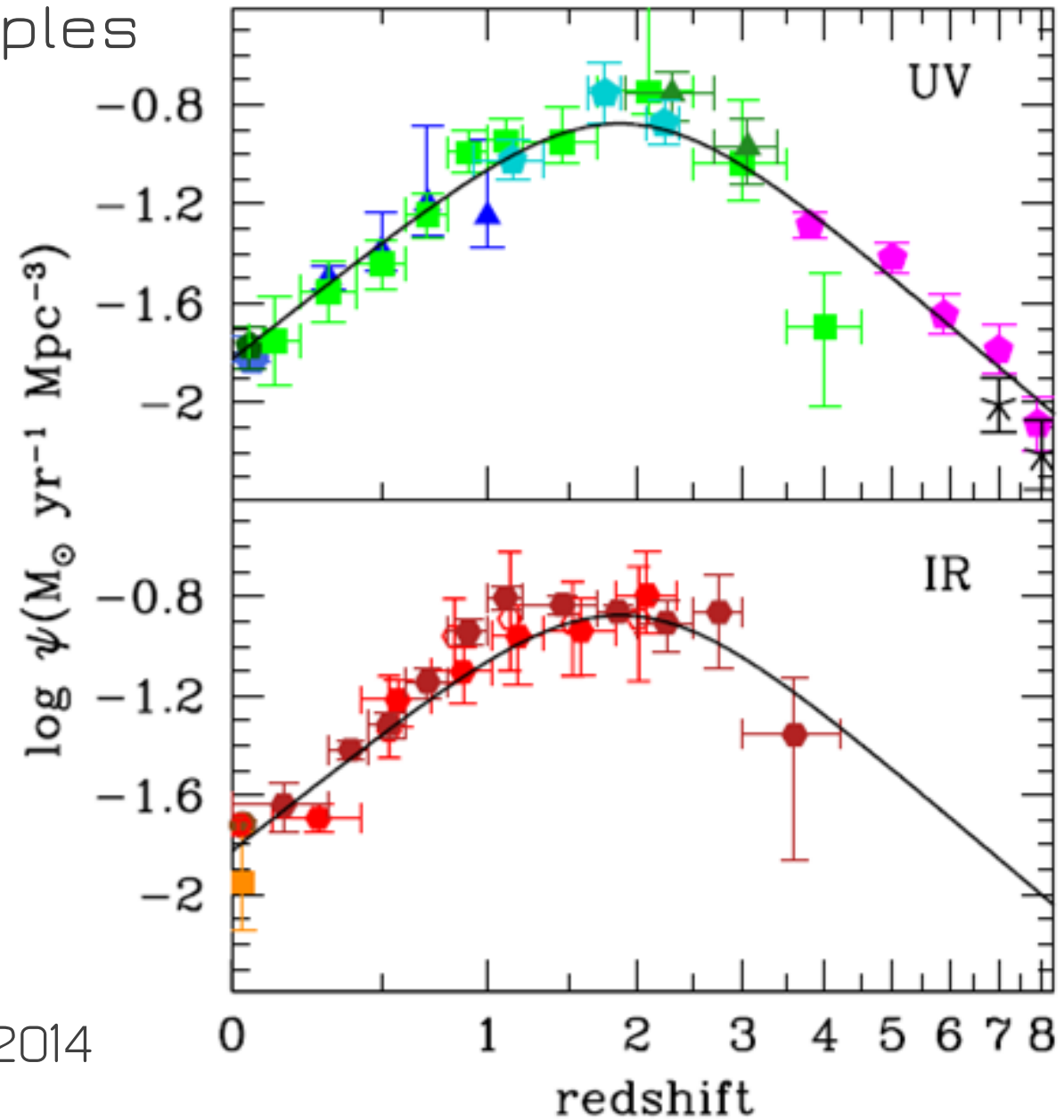


# Why $3 < z < 6$ ?



# Why $3 < z < 6$ ?

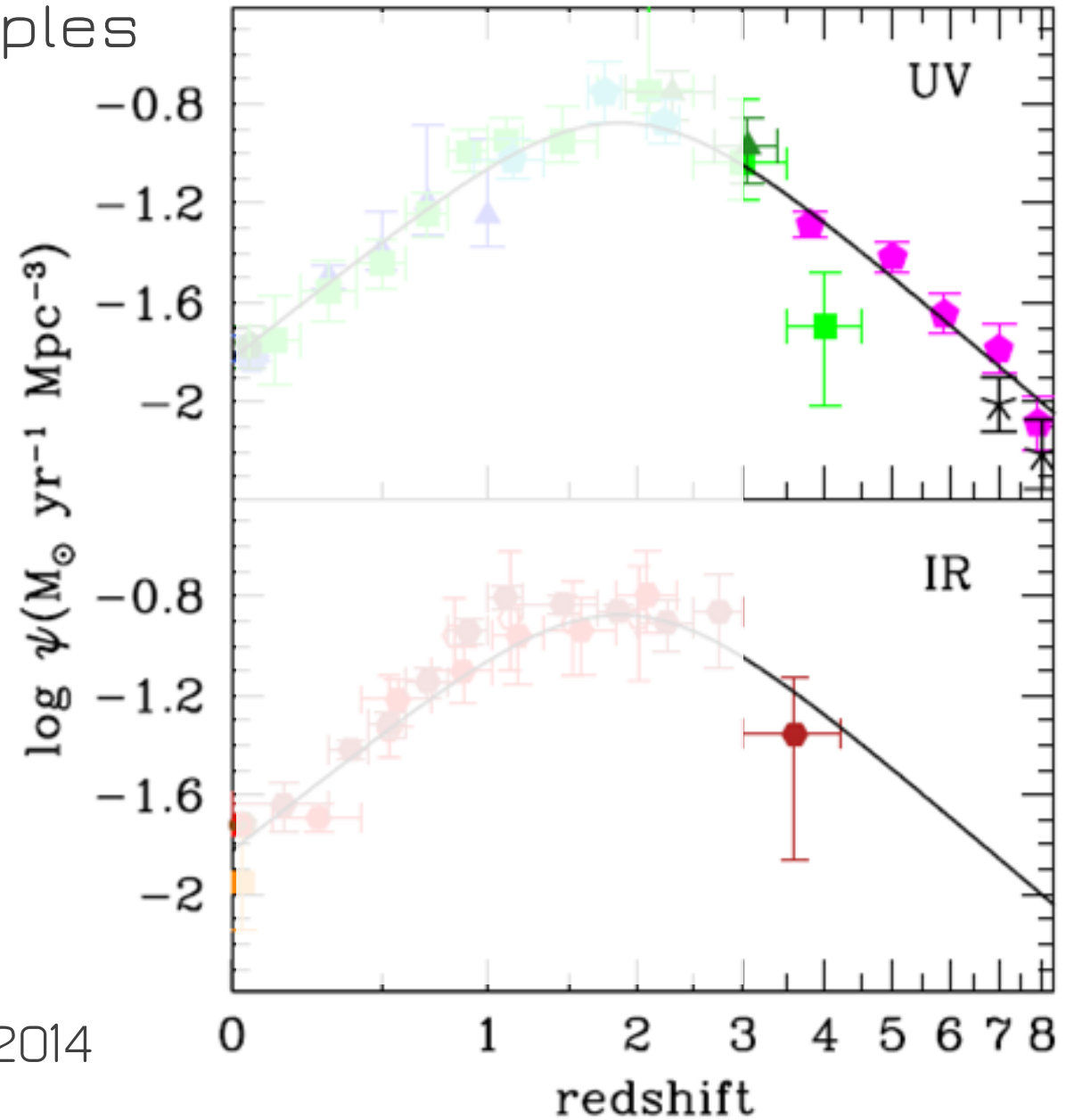
Cosmic SFR density at  $z > 3$  mostly based on UV-selected samples



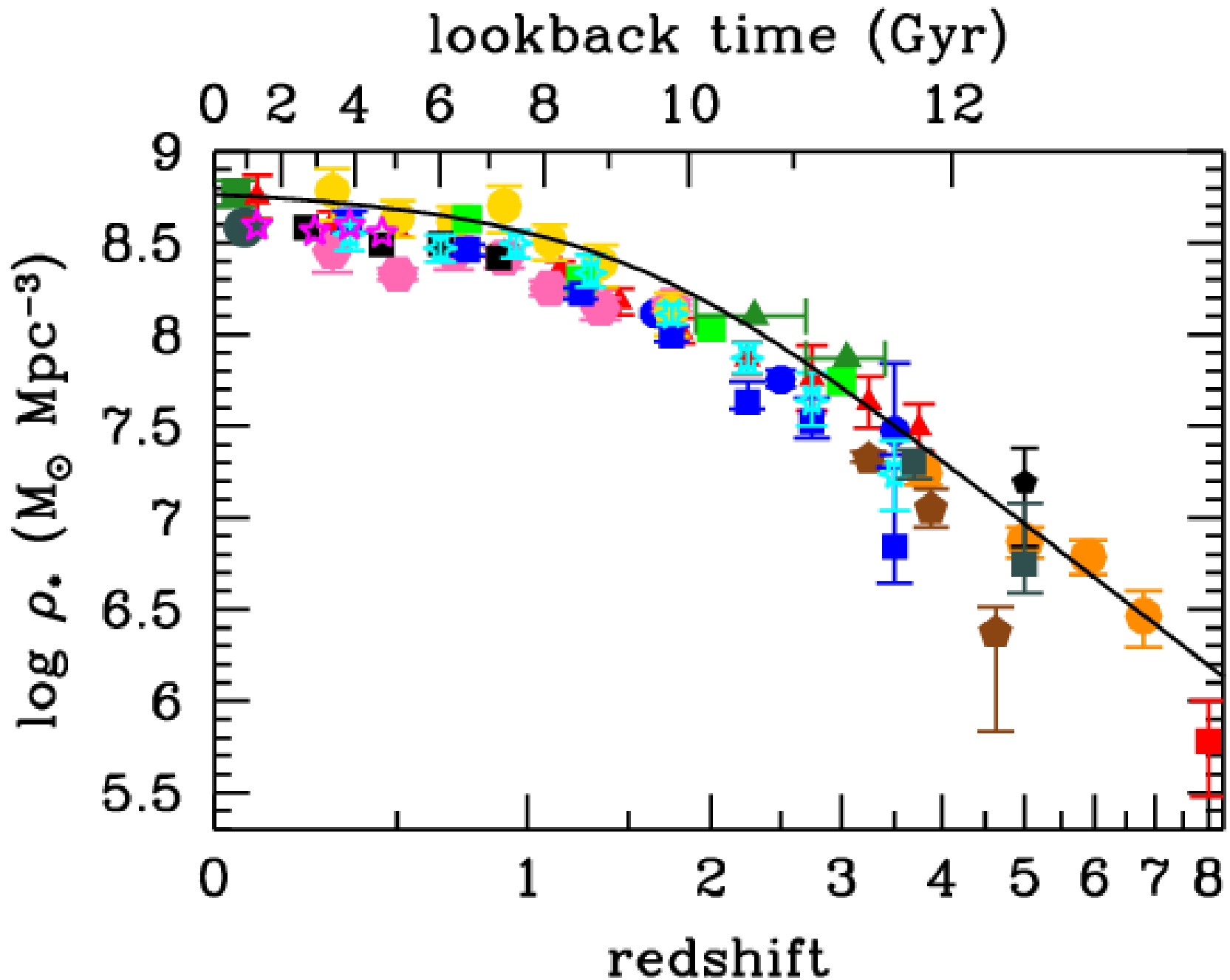
Madau & Dickinson 2014

# Why $3 < z < 6$ ?

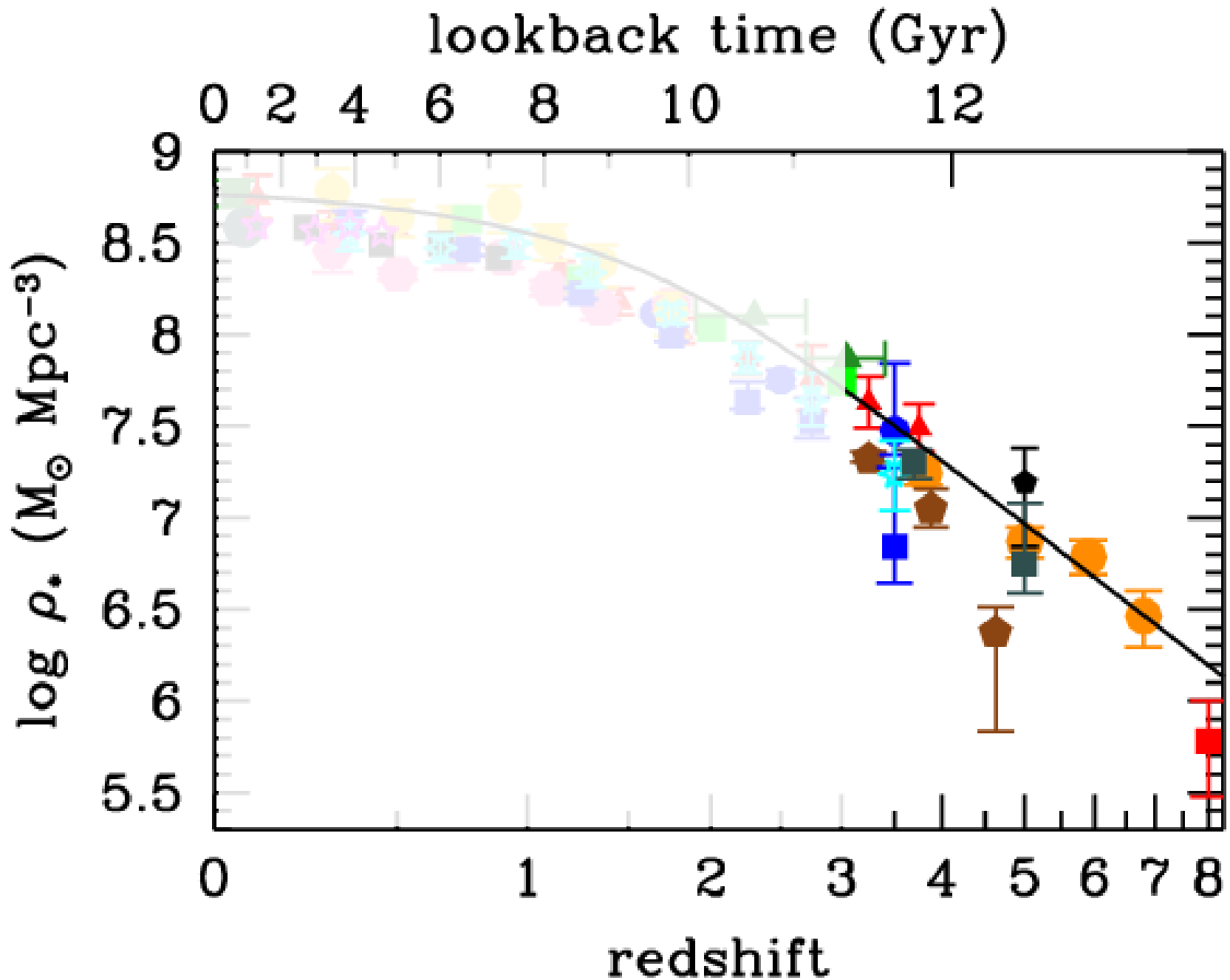
Cosmic SFR density at  $z > 3$  mostly based on UV-selected samples



# Evolution of the Stellar Mass



# Evolution of the Stellar Mass



# Massive galaxies at $3 < z < 6$

## Census of galaxies at $3 < z < 6$

Red sources (massive or dusty)

Emission-line galaxies (LAEs)

Lyman Break Galaxies (LBGs),

## Study their physical properties?

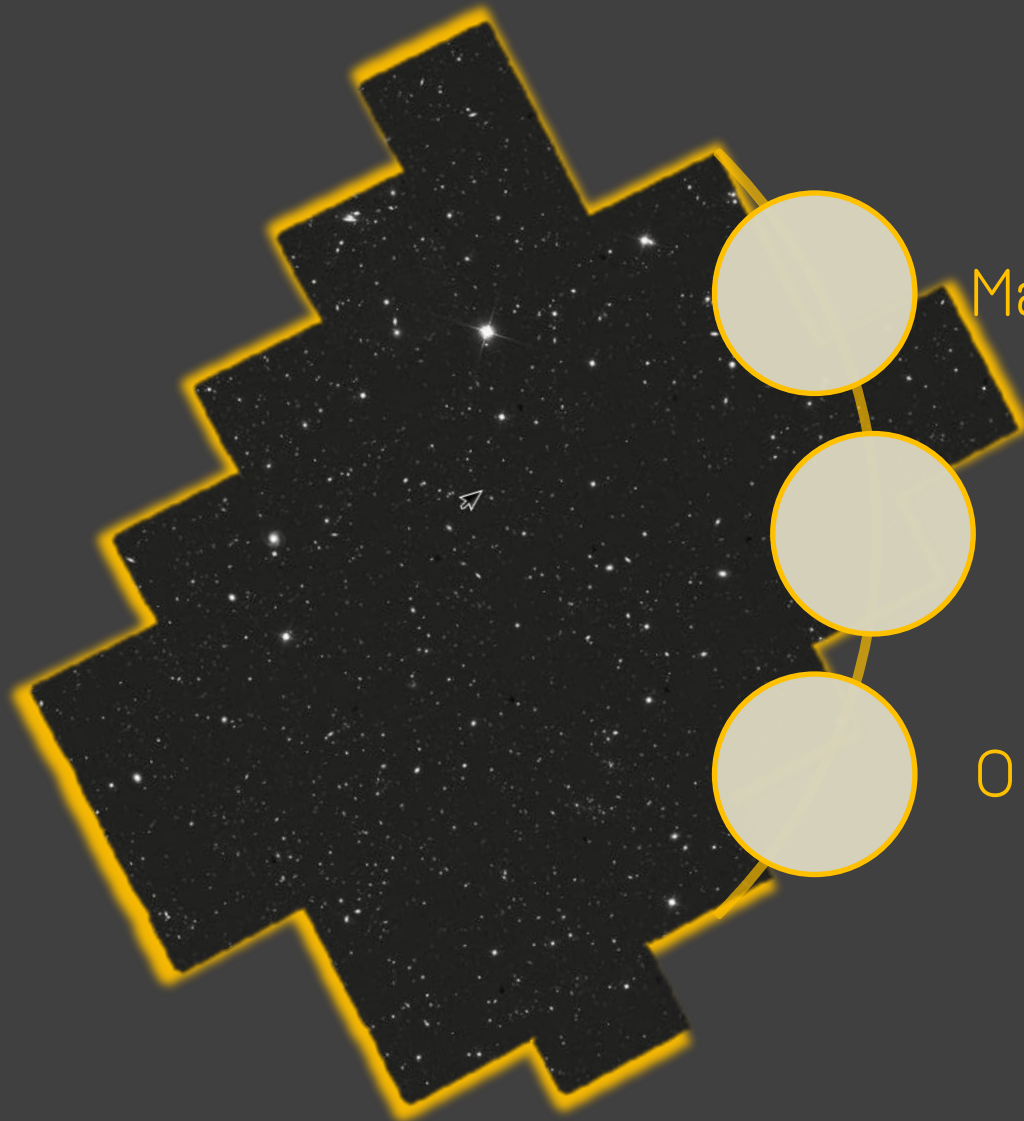
Analysis of their stellar populations & SFH.

Understand earliest phases in the formation of galaxies.



# Searching for massive galaxies

GOODS-N field



Massive galaxies  $z > 3$

Distant = faint

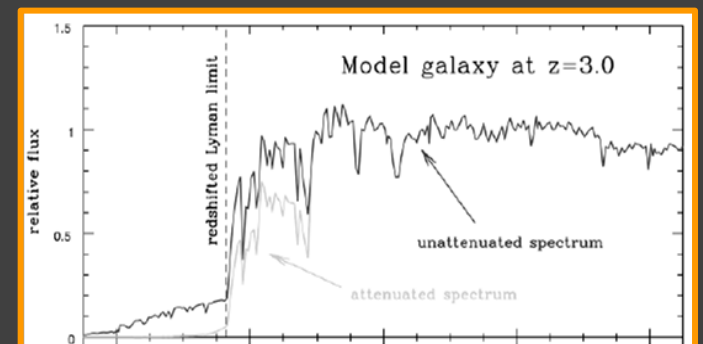
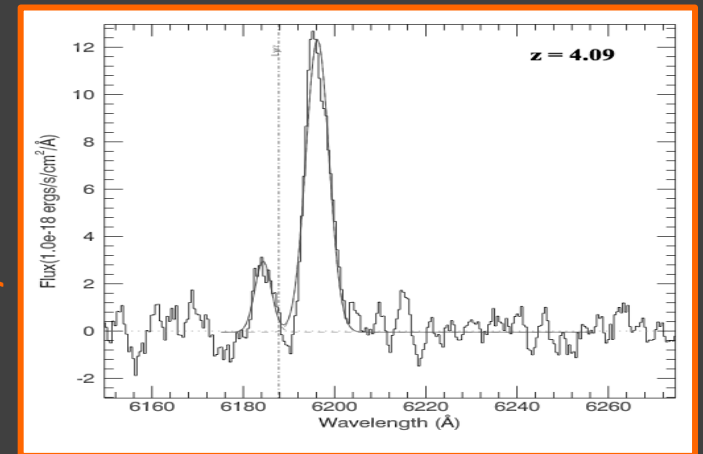
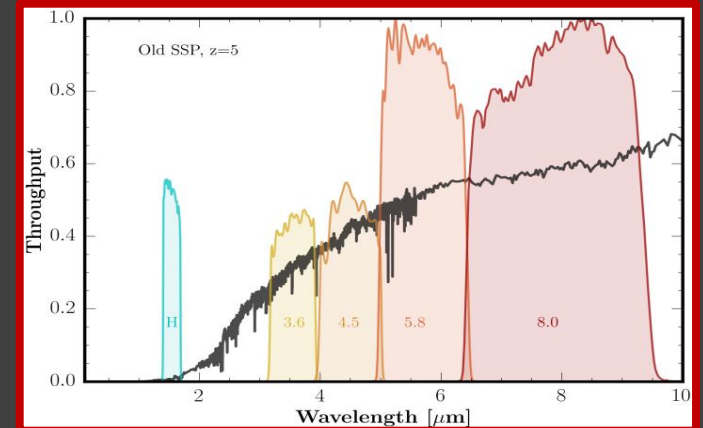
Optical  $\rightarrow$  nearIR

# Color-selection criteria

Distant red galaxies

Emission line galaxies:  
LAEs

Lyman/Balmer breaks  
dropouts



Mallery et al. 2012

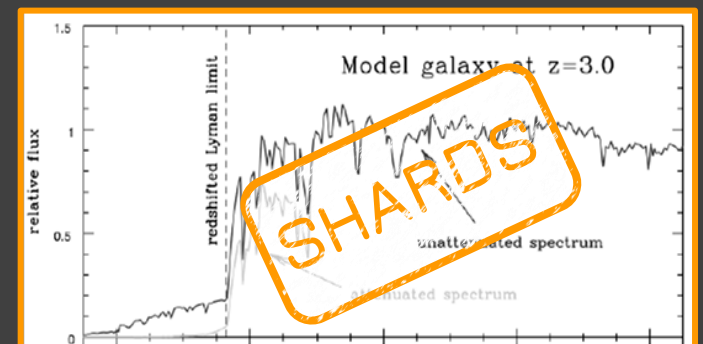
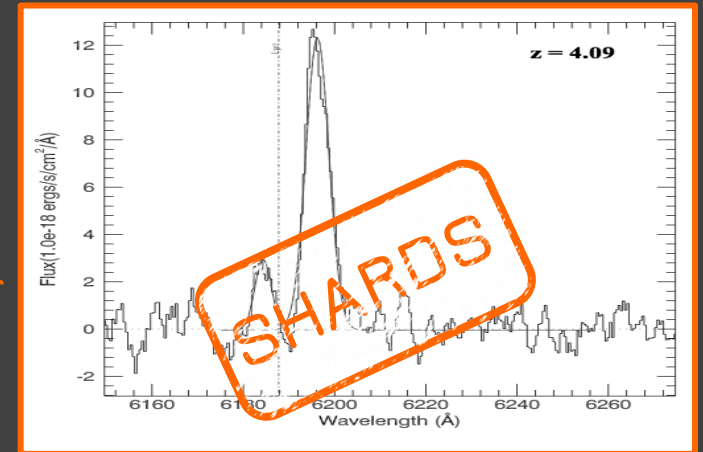
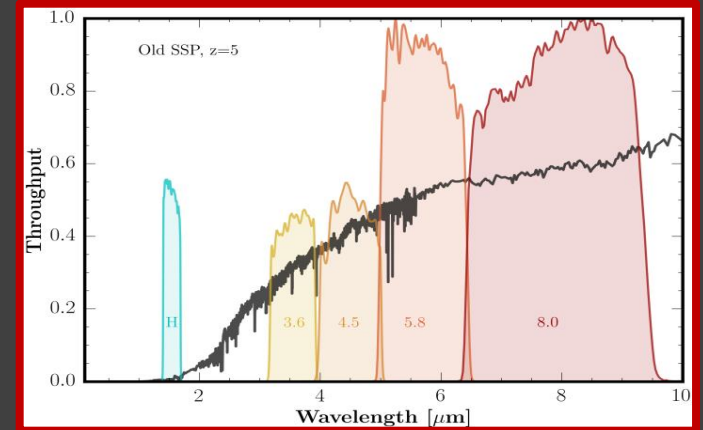
R Ellis et al 1998

# Color-selection criteria

Distant red galaxies

Emission line galaxies:  
LAEs

Lyman/Balmer breaks  
dropouts



Mallery et al. 2012

R Ellis et al 1998

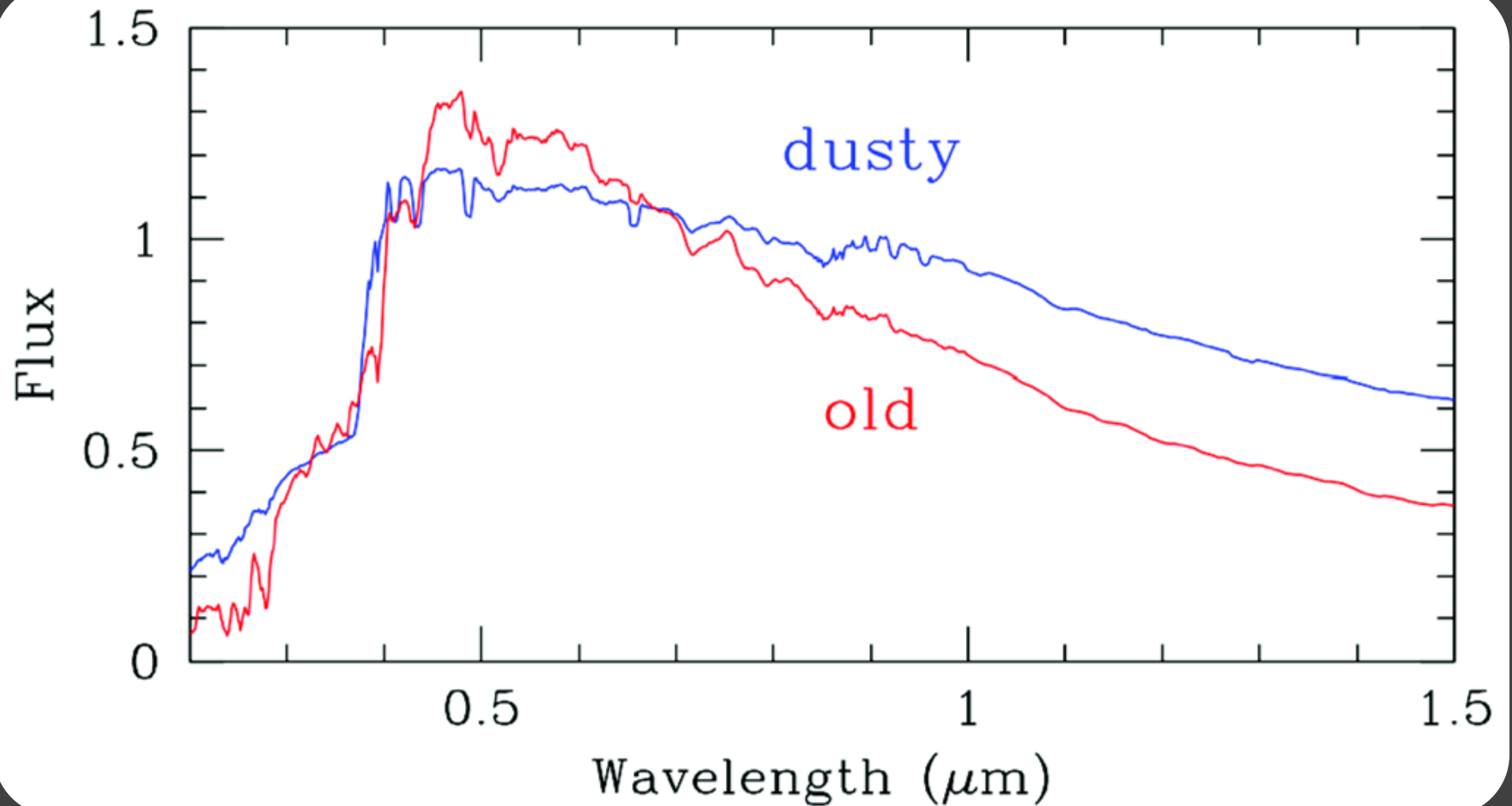
# Massive Red galaxies

Red

Red galaxies in the rest frame

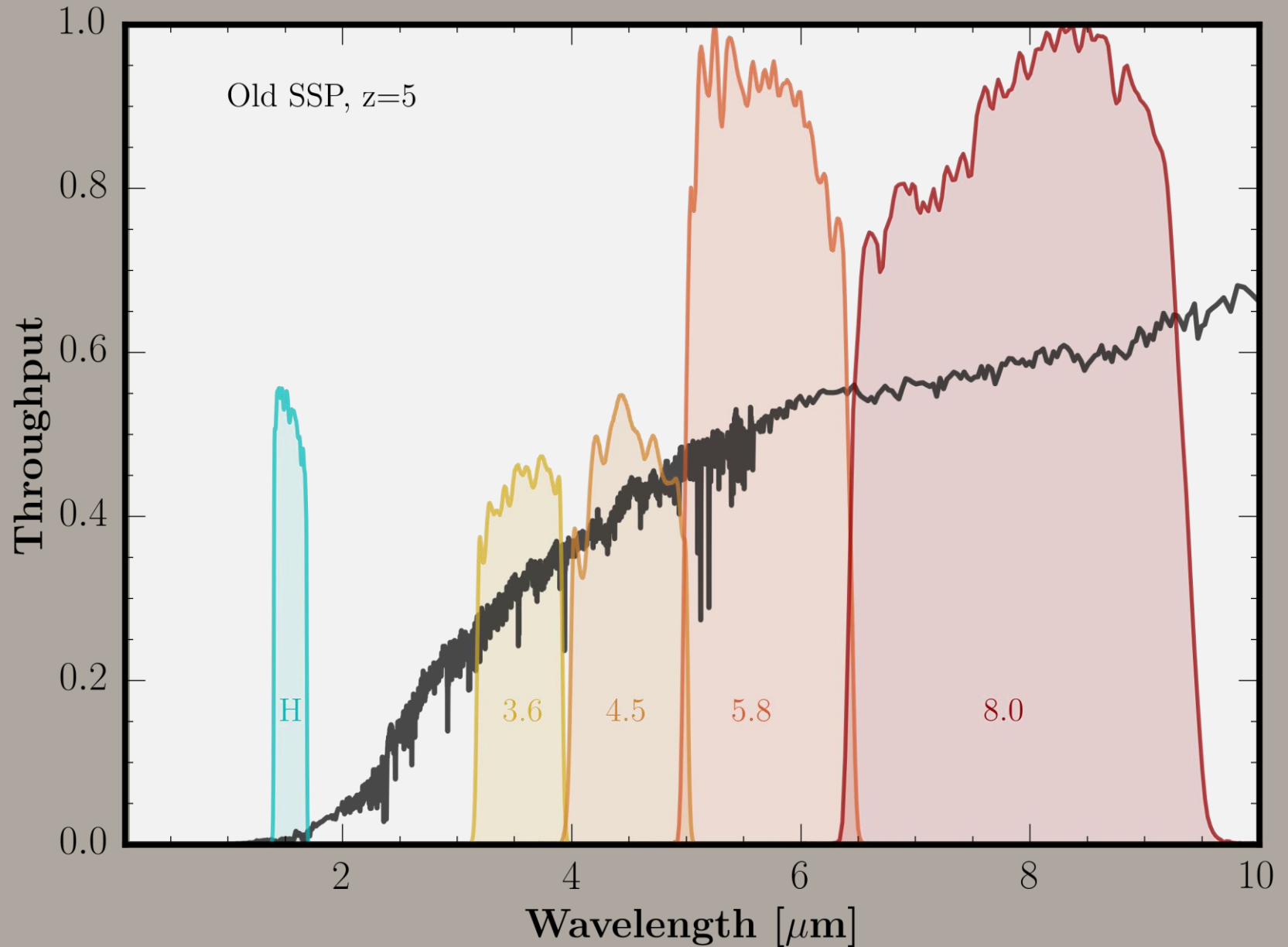
\*\* Dusty?

\* Old?



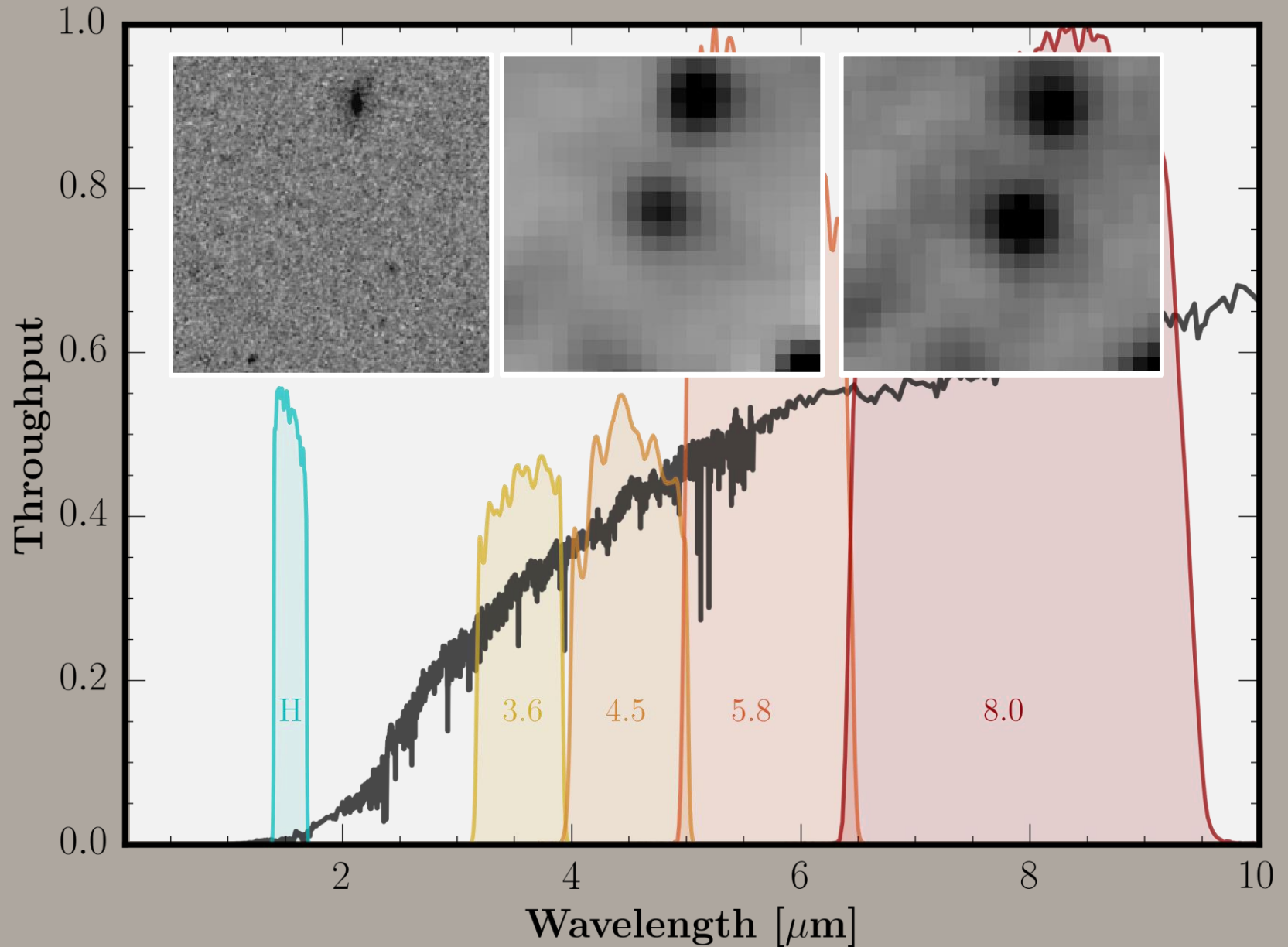
# Red sources: H-Band dropouts

Distant red galaxies

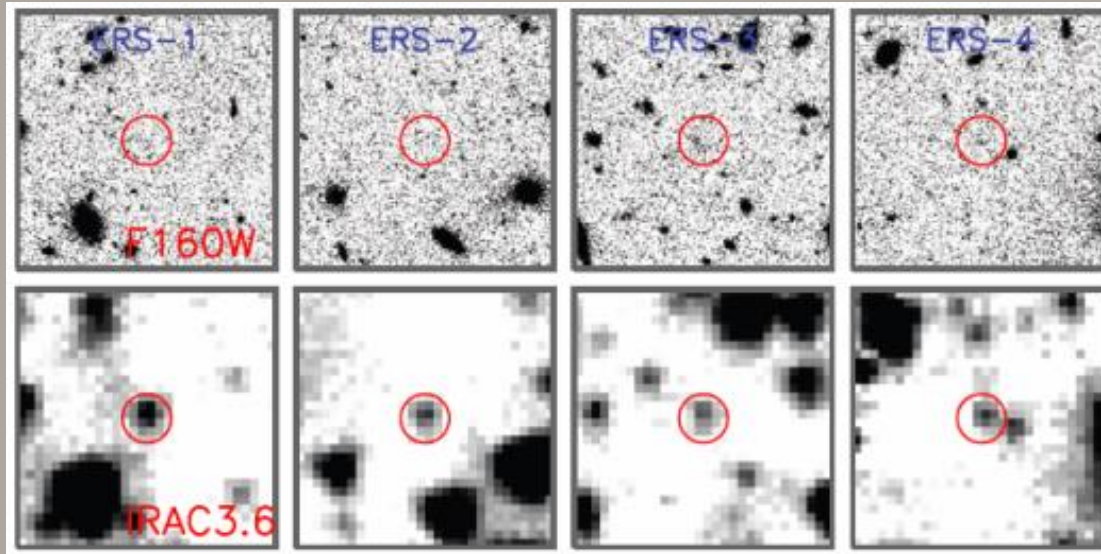


# Red sources: H-Band dropouts

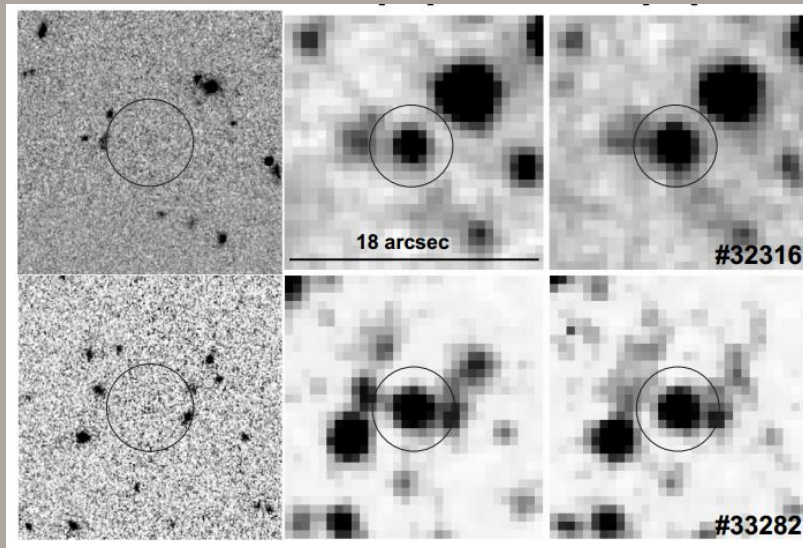
Distant red galaxies



# Red sources: H-Band dropouts



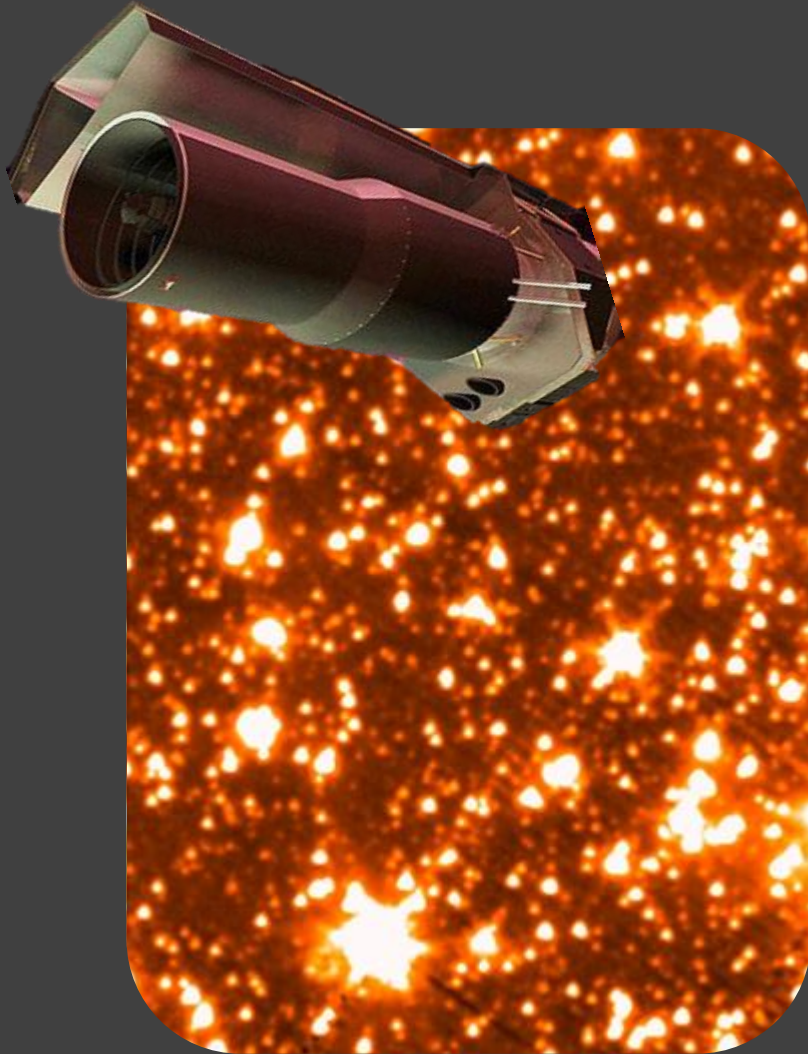
Huang et al. 2011



Caputi et al. 2012

# H-Band dropouts

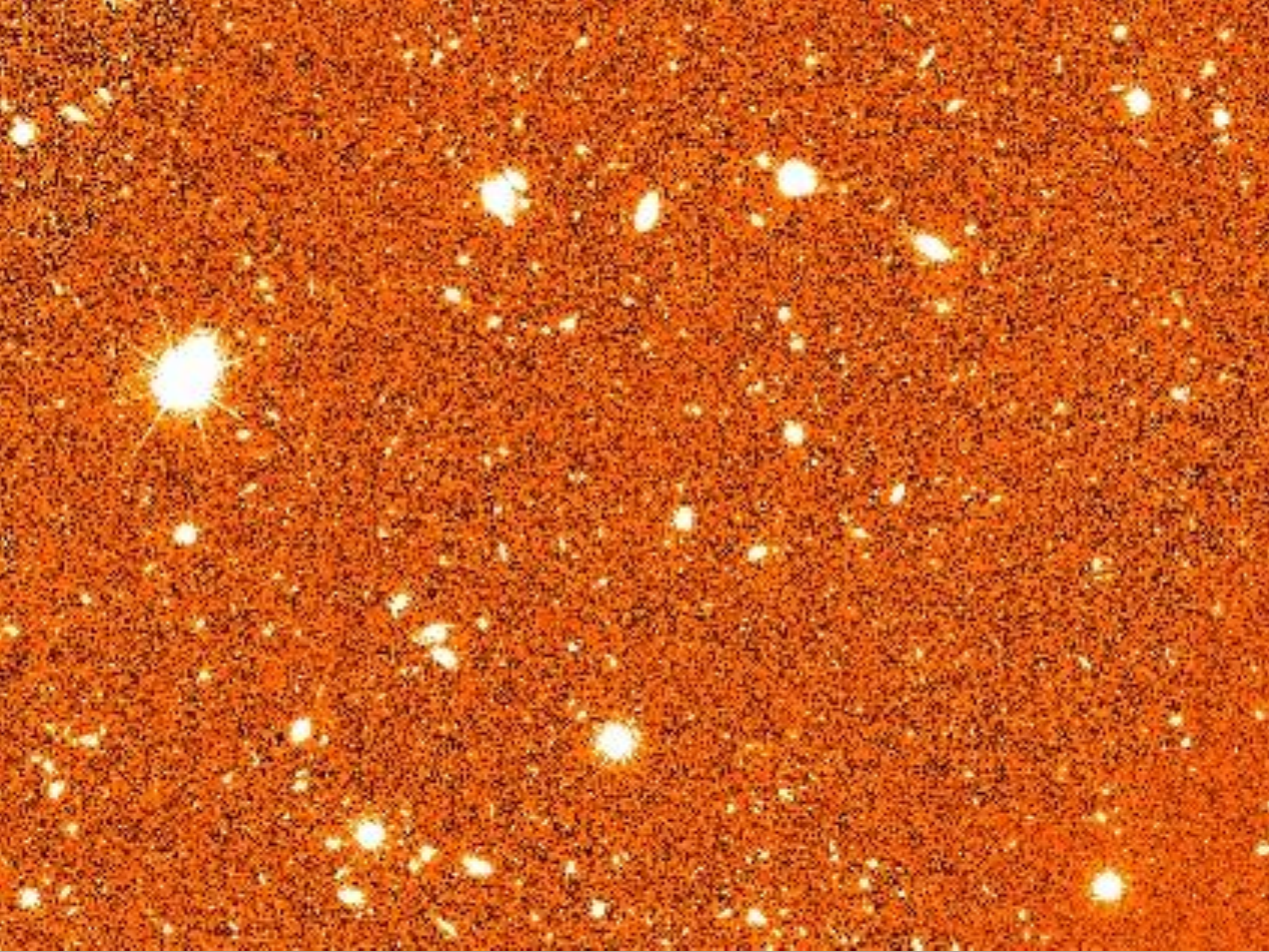
Spitzer Space Telescope

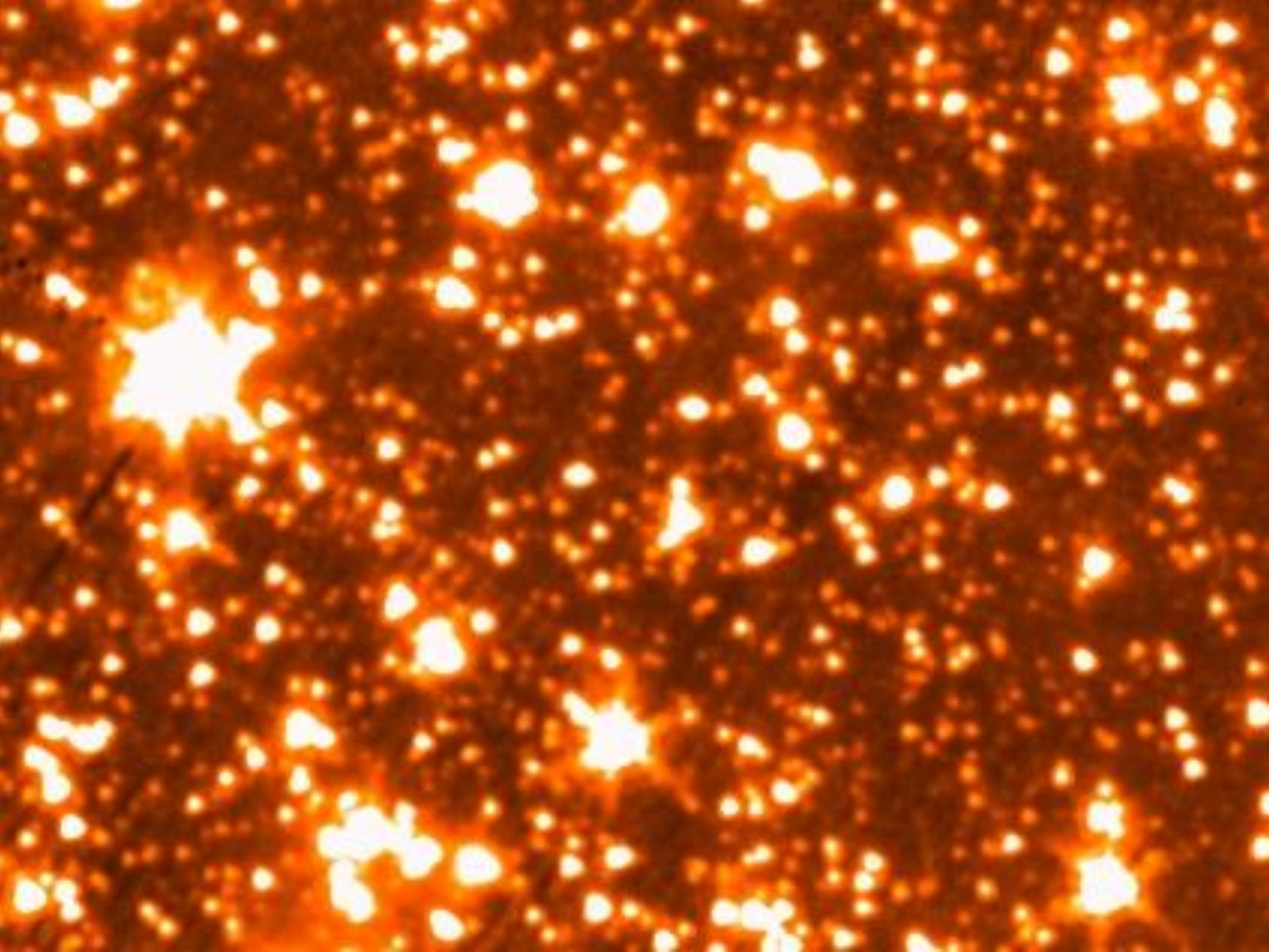


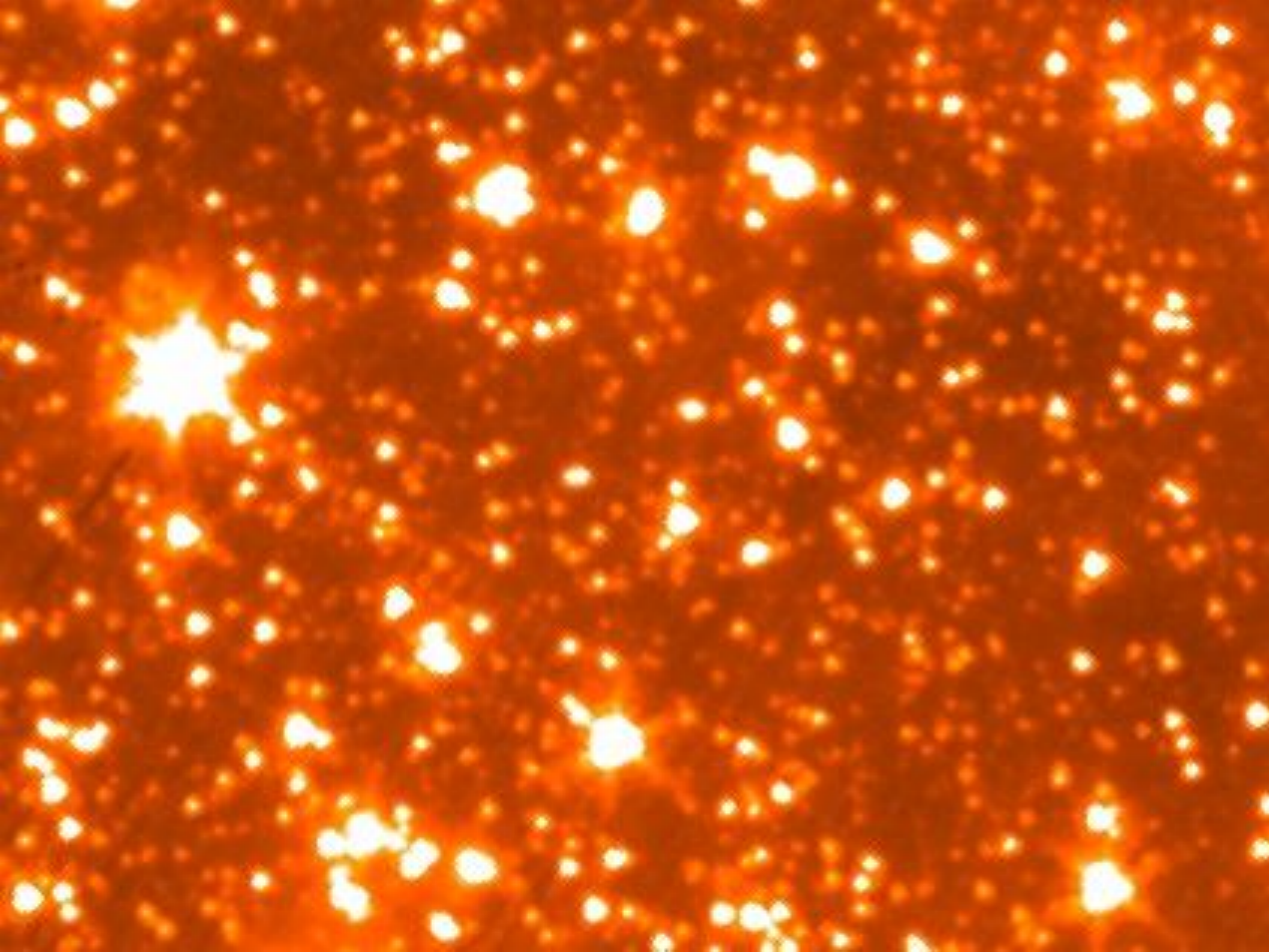
Hubble Space Telescope  
[HST]

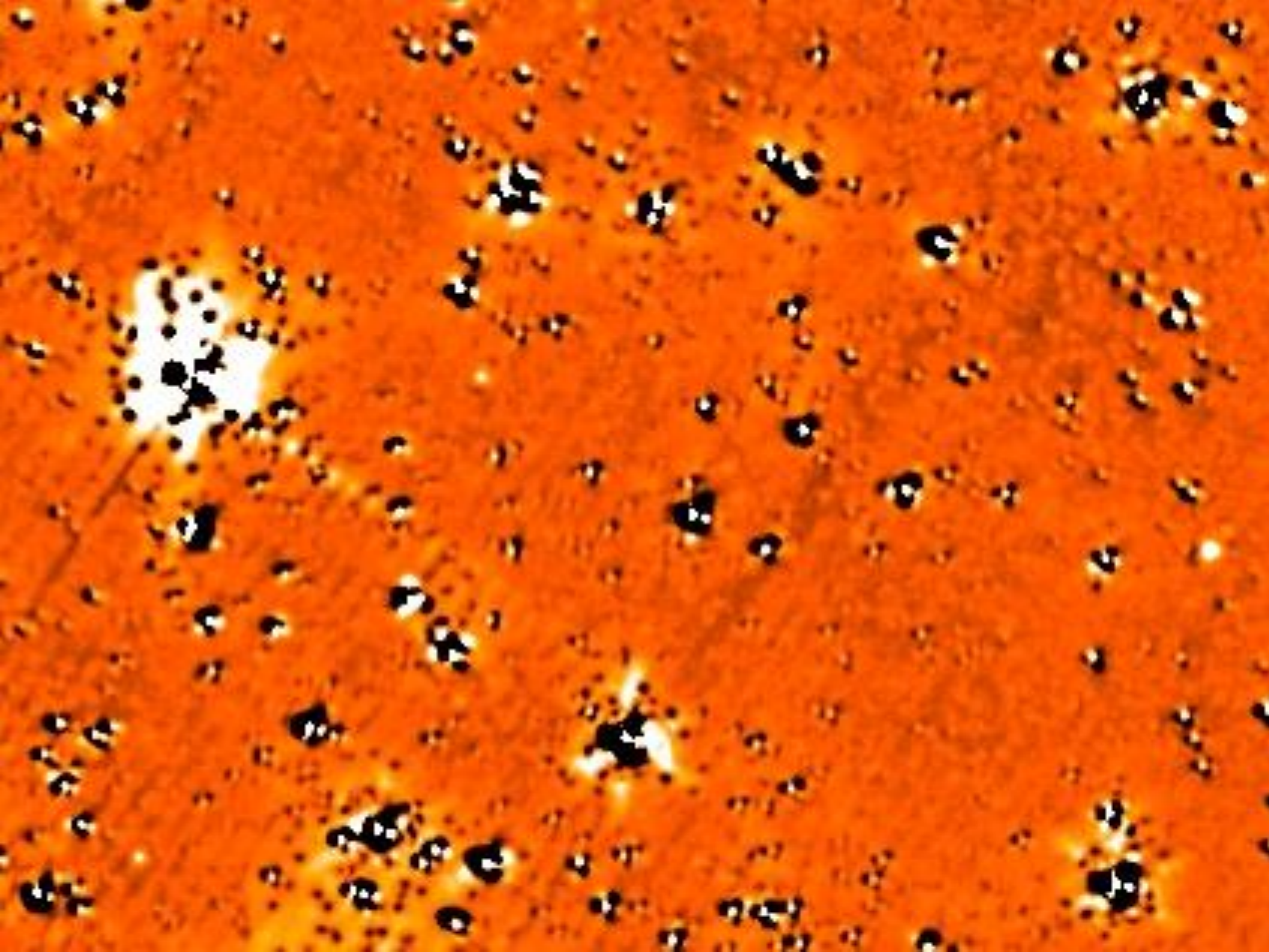




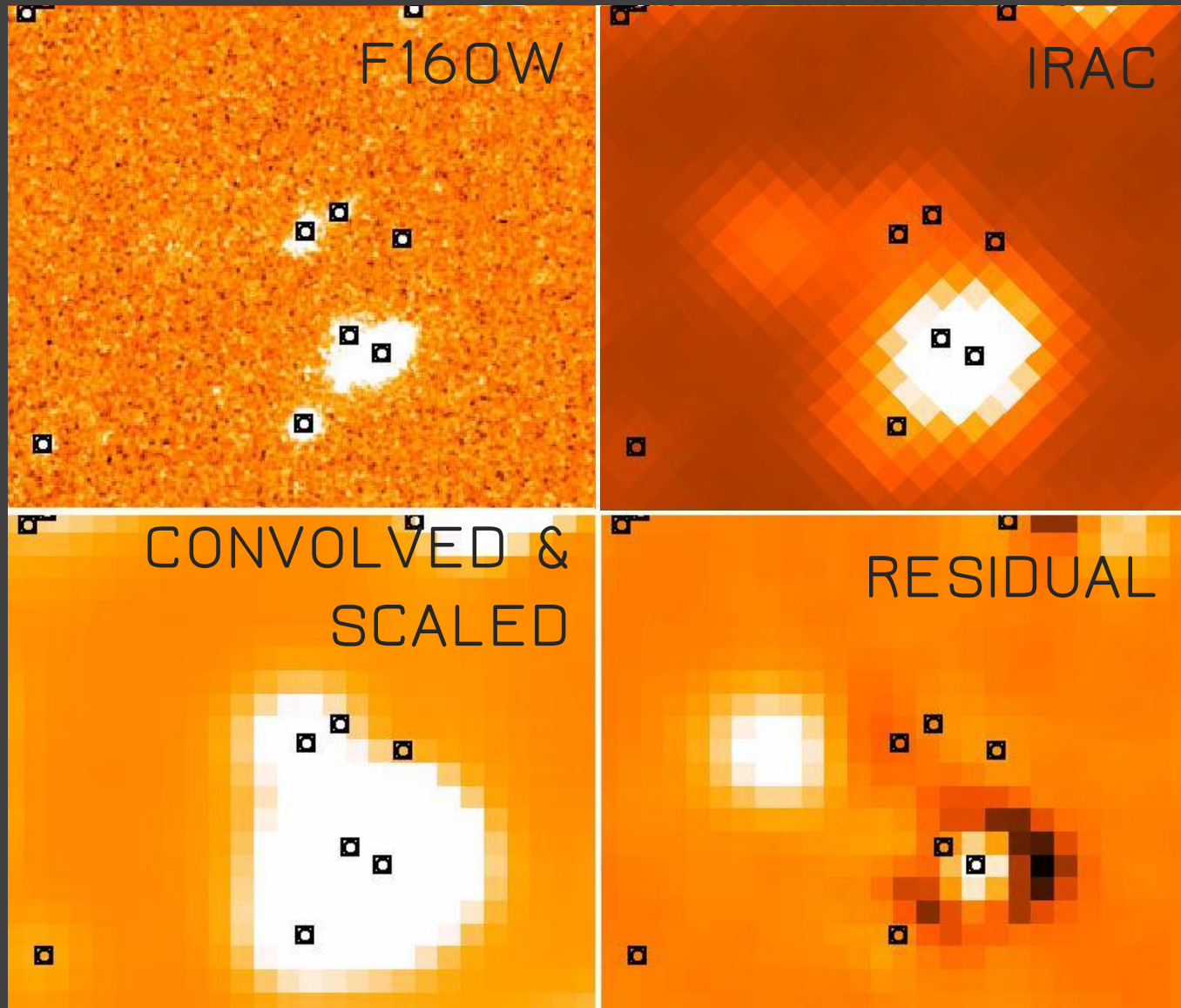




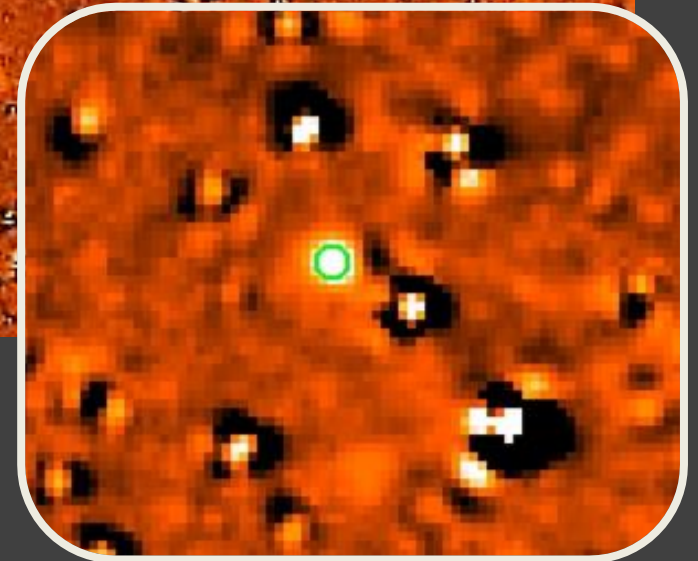
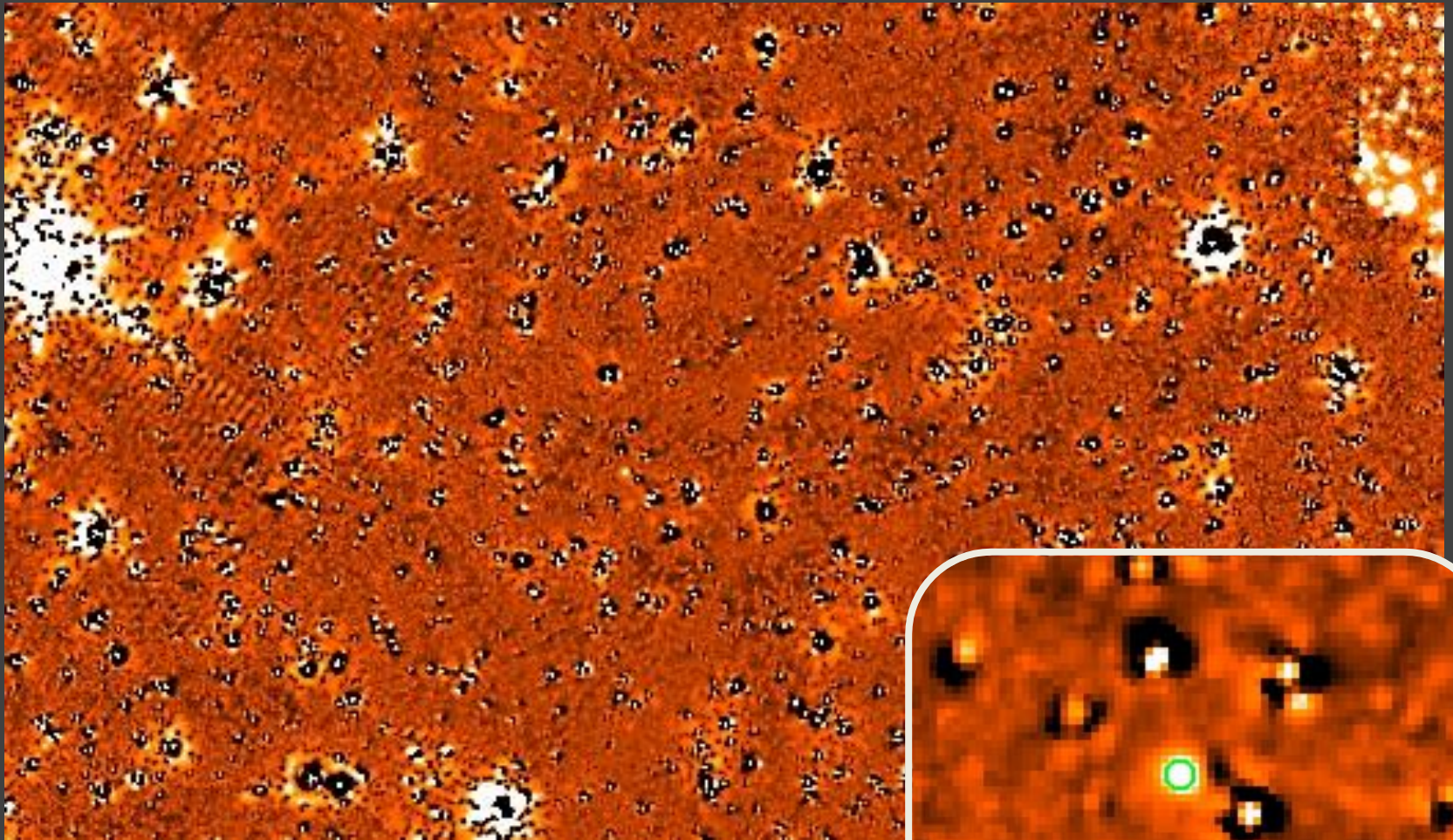




# Selection process: TFIT

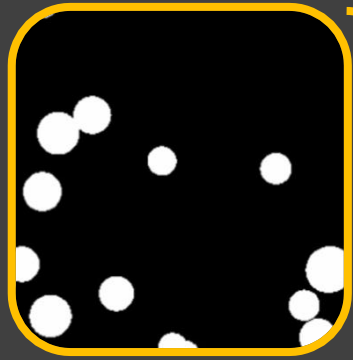


# Selection process



# Selection process: Masks

stars



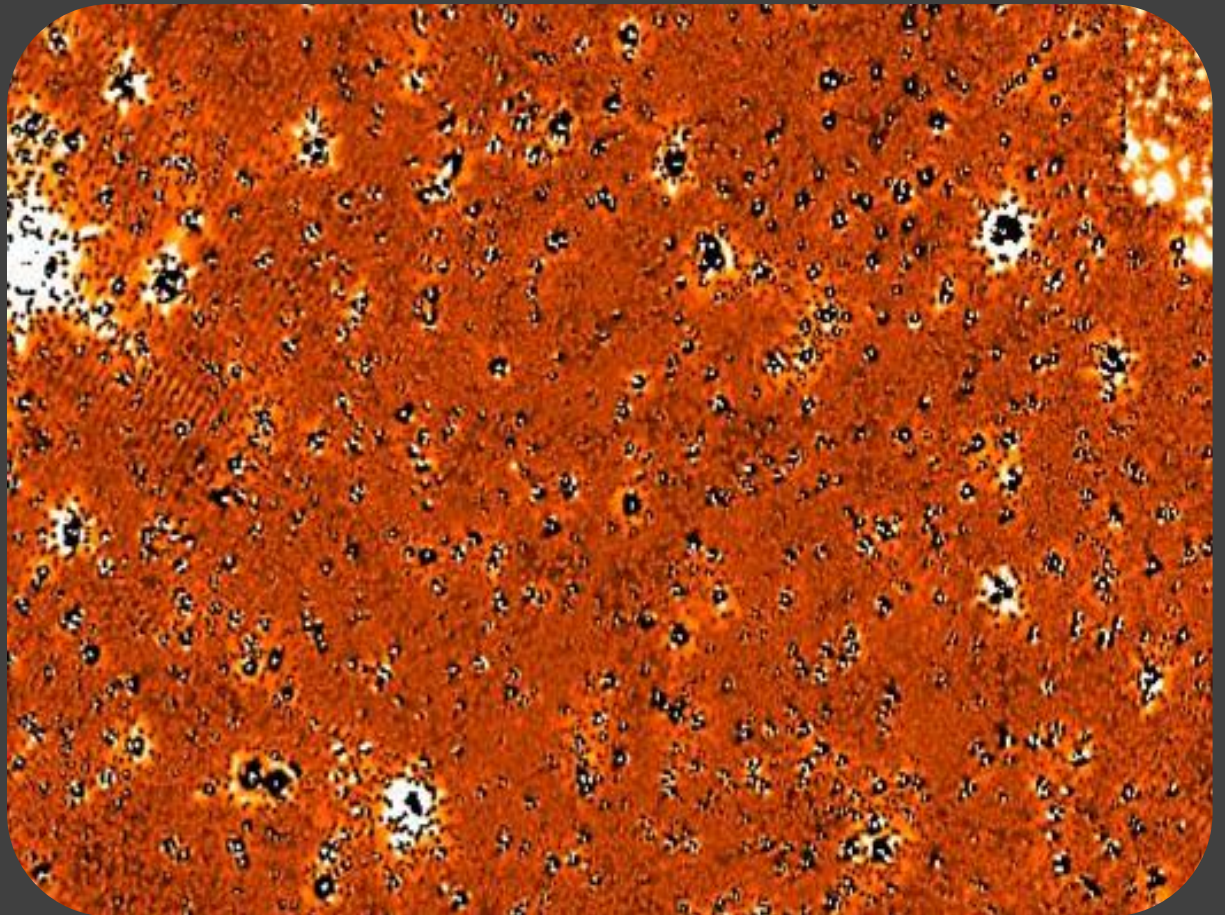
cores



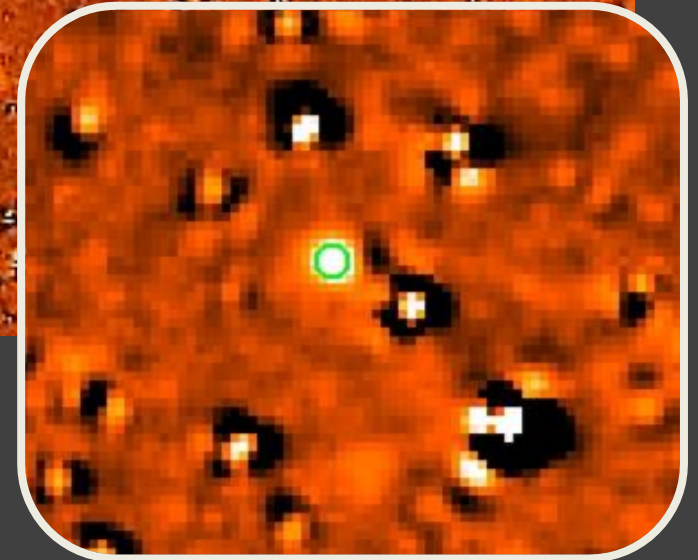
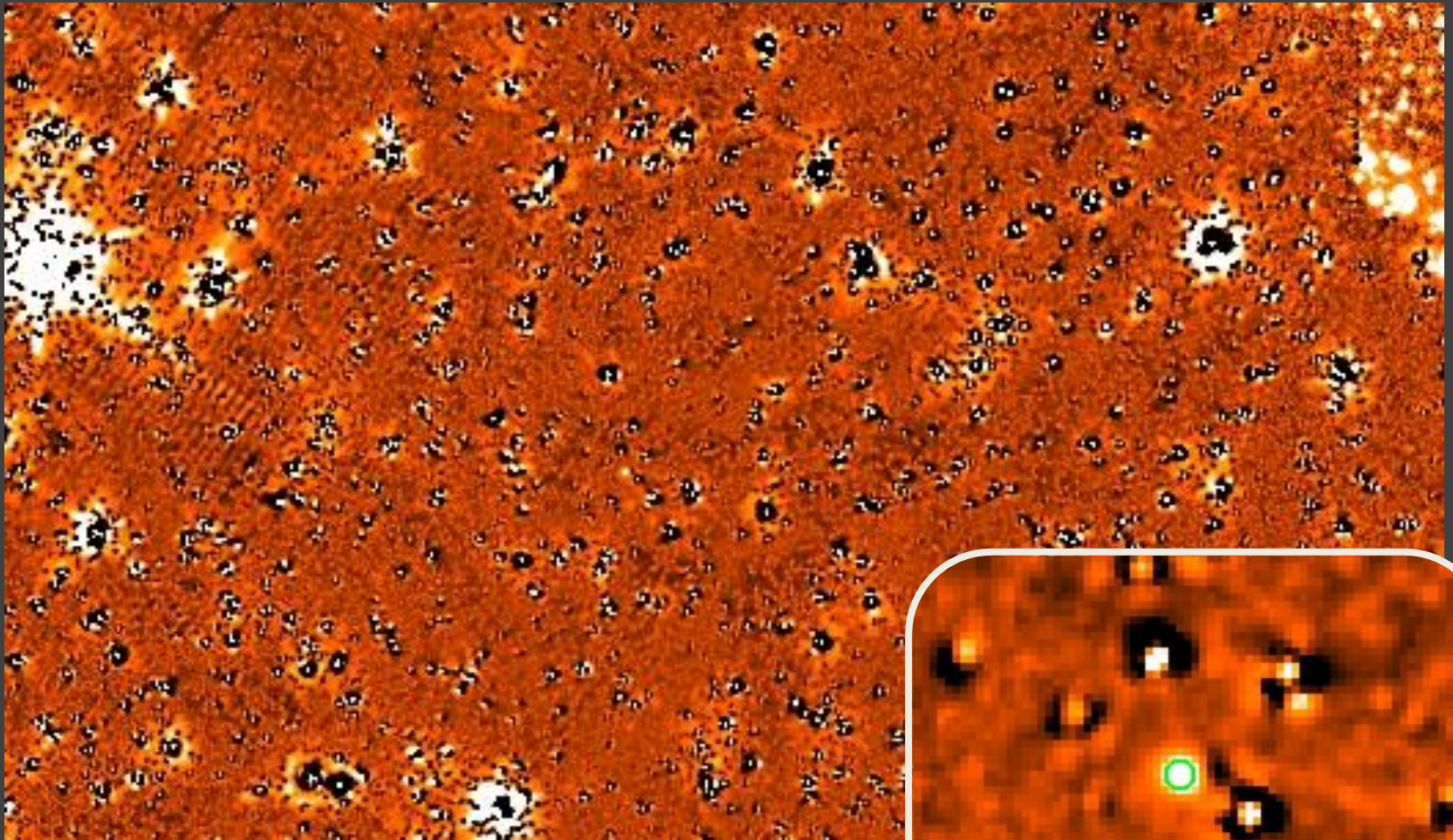
pixels



Apply masks to avoid spurious detections

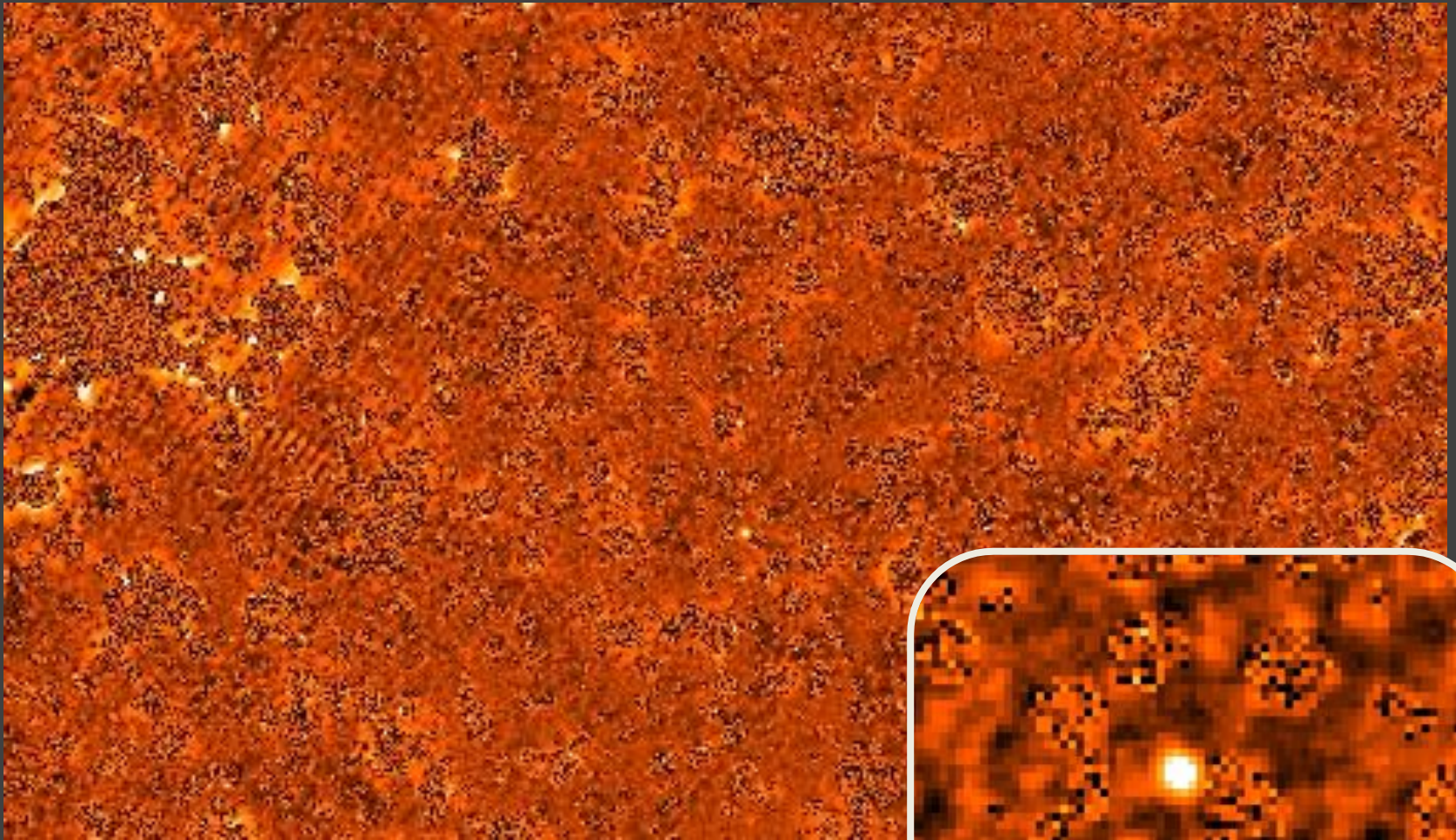


# Selection process

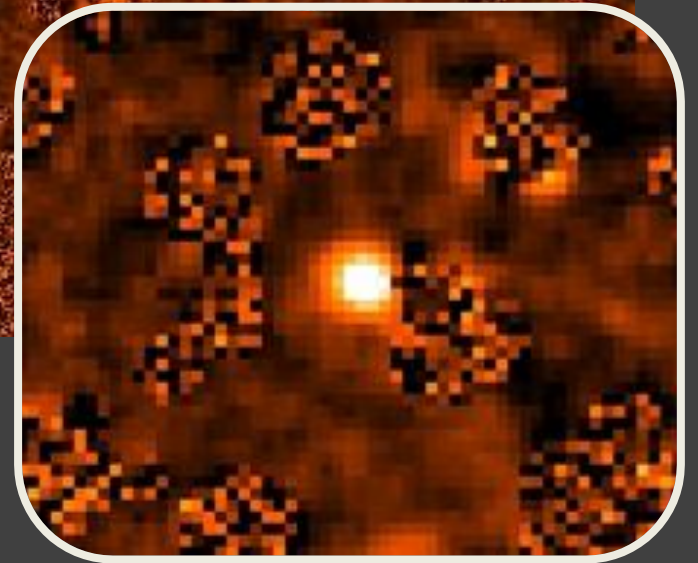
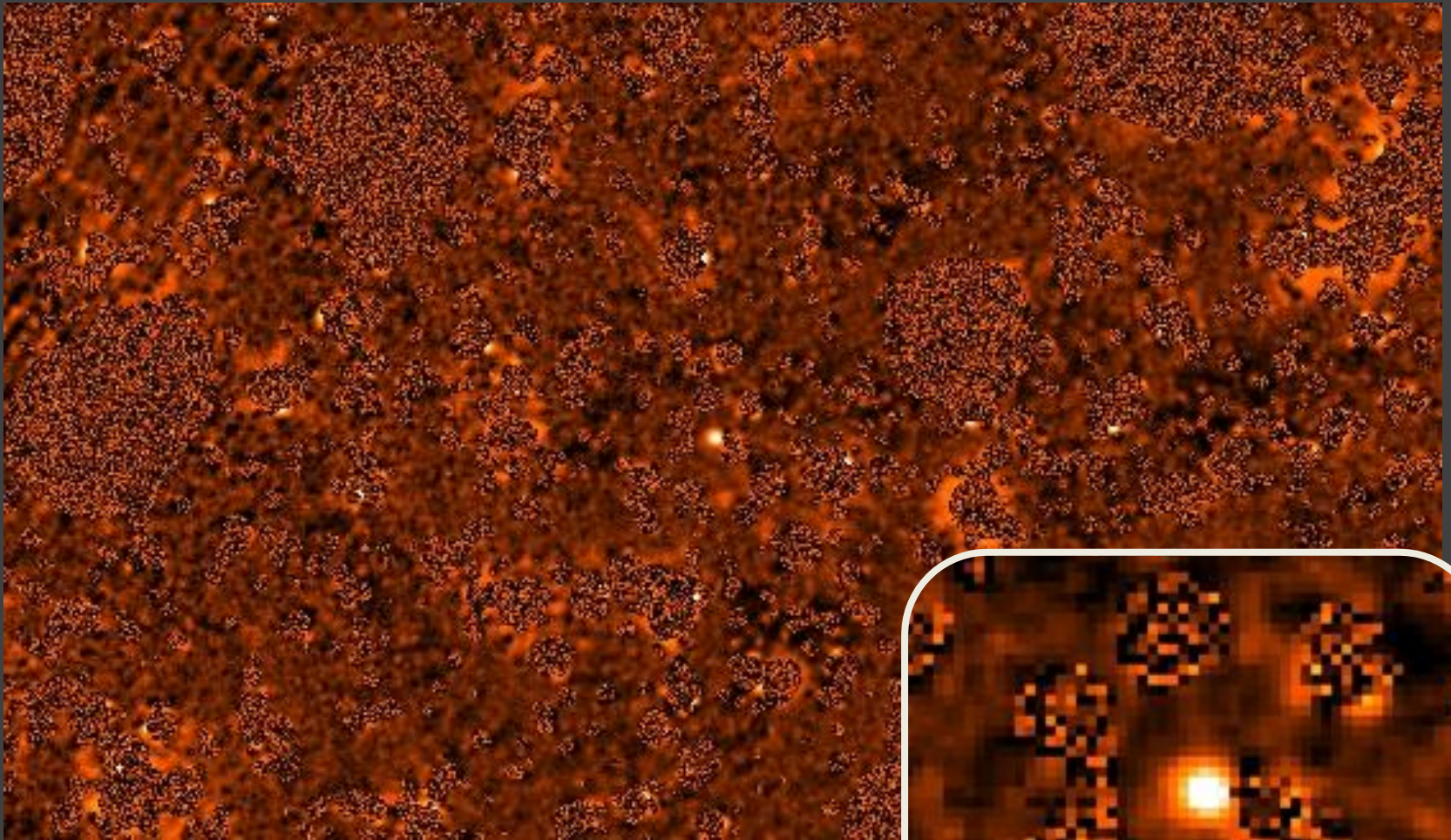




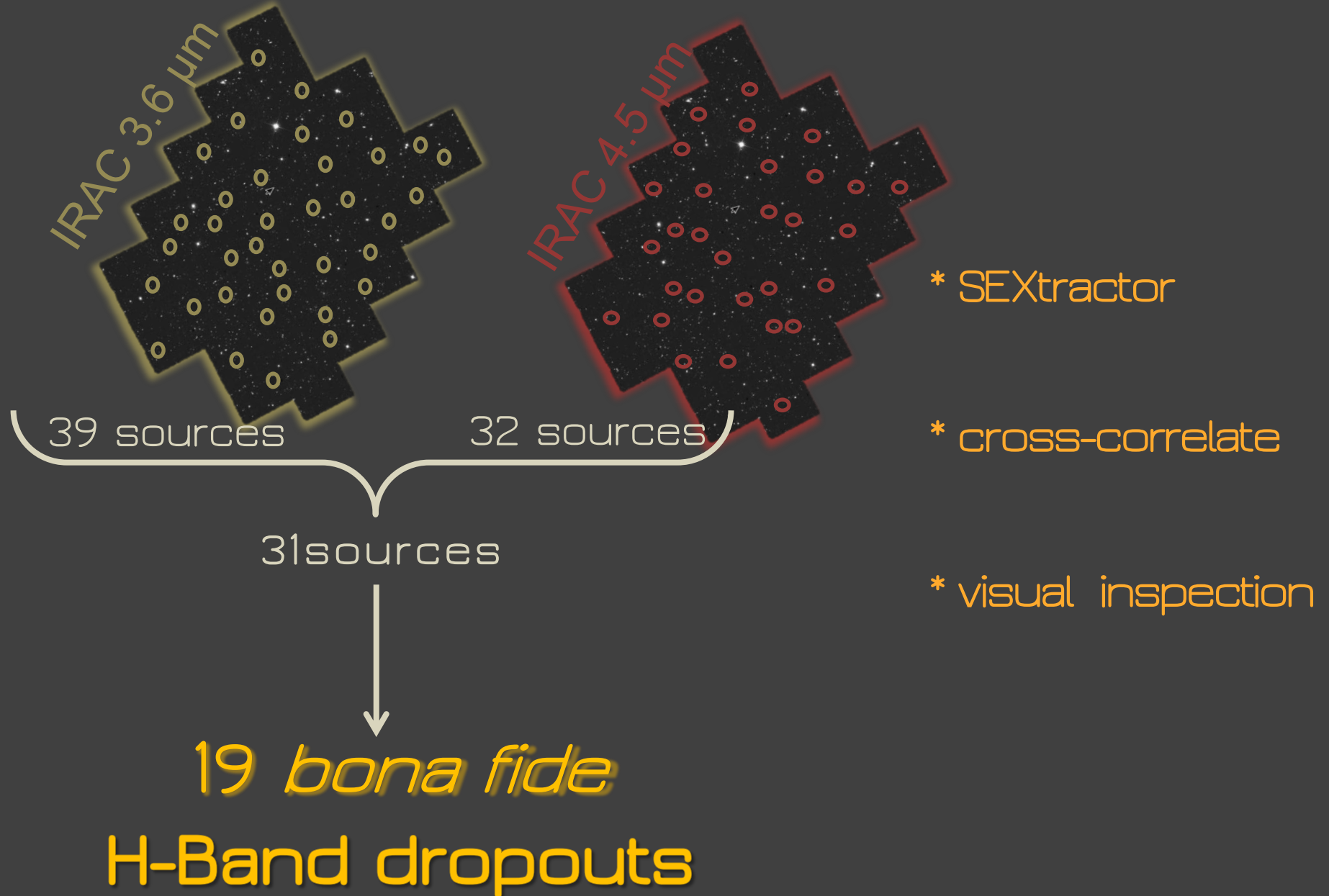
# Selection process: Masks



# Selection process: wings



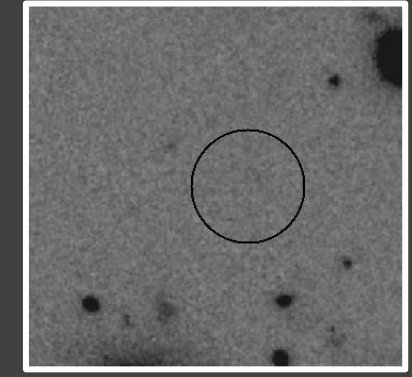
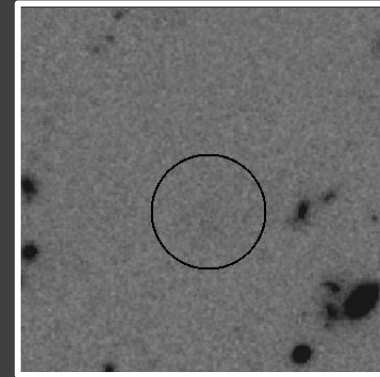
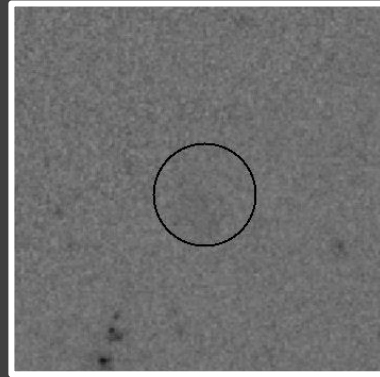
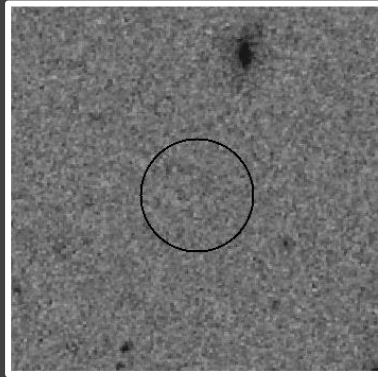
# Selection process



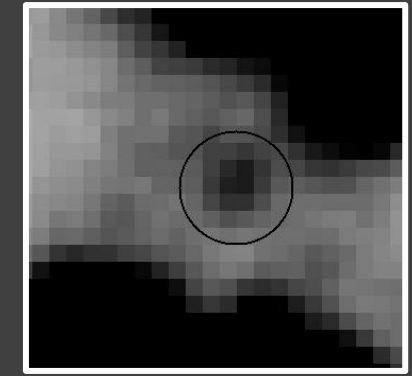
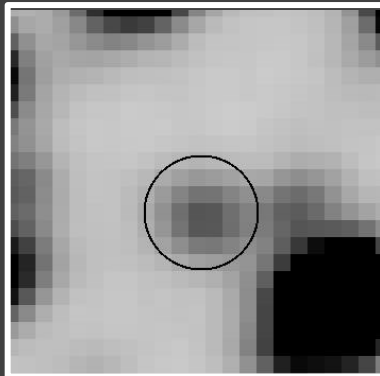
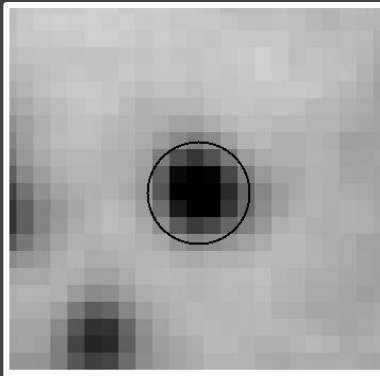
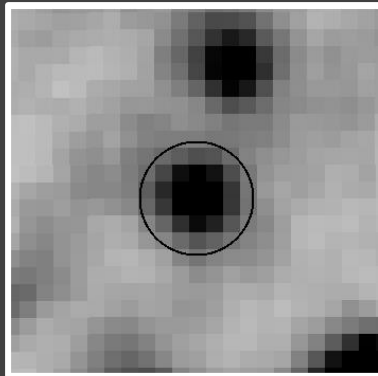
# Nature of IRAC only sources

Pérez-González et al. 2005,08

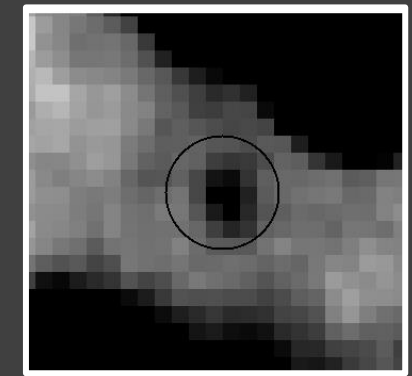
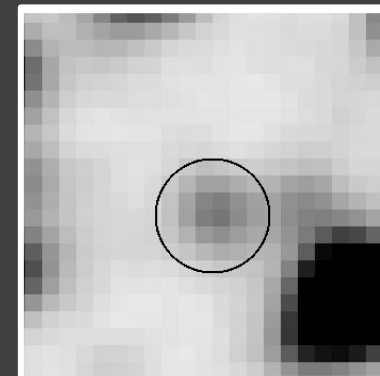
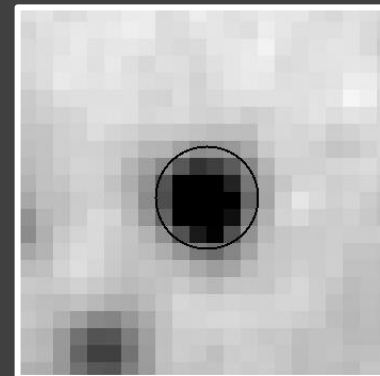
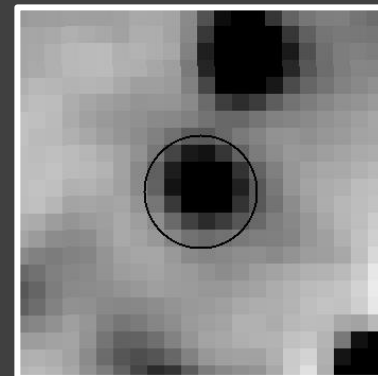
F160W [H]



IRAC 3.6μm

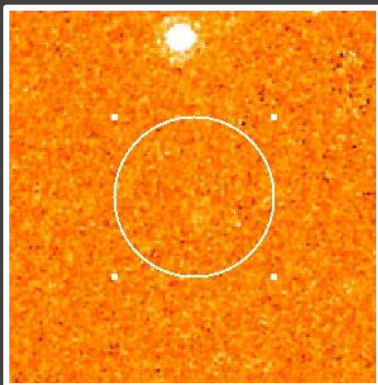


IRAC 4.5μm

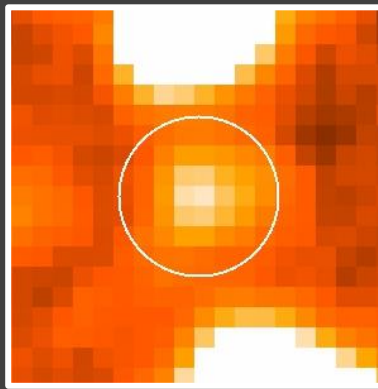


# Nature of IRAC only sources

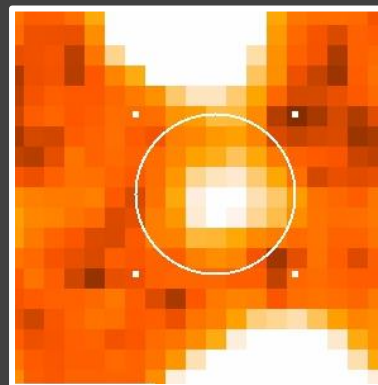
Search for counterparts



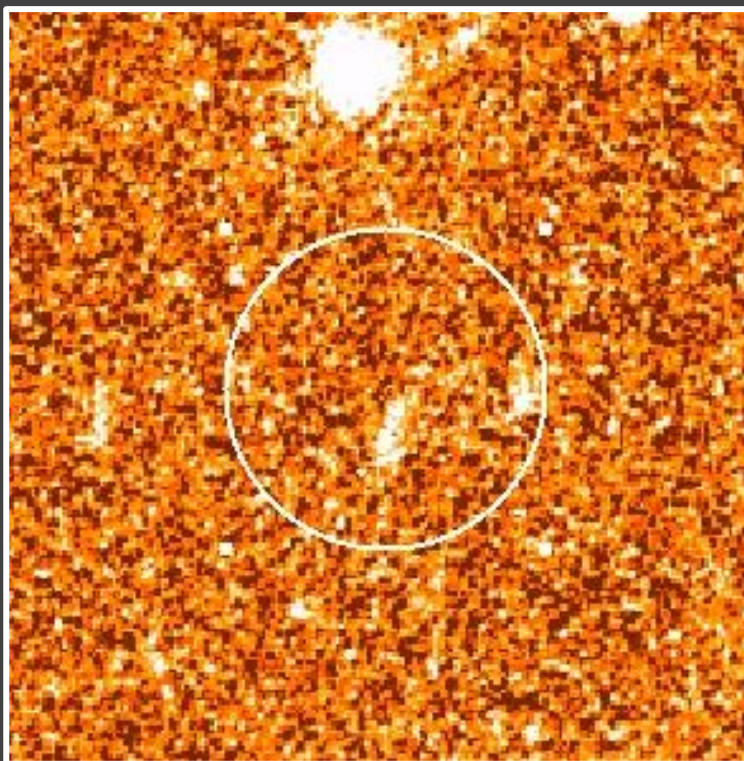
F160W [H]



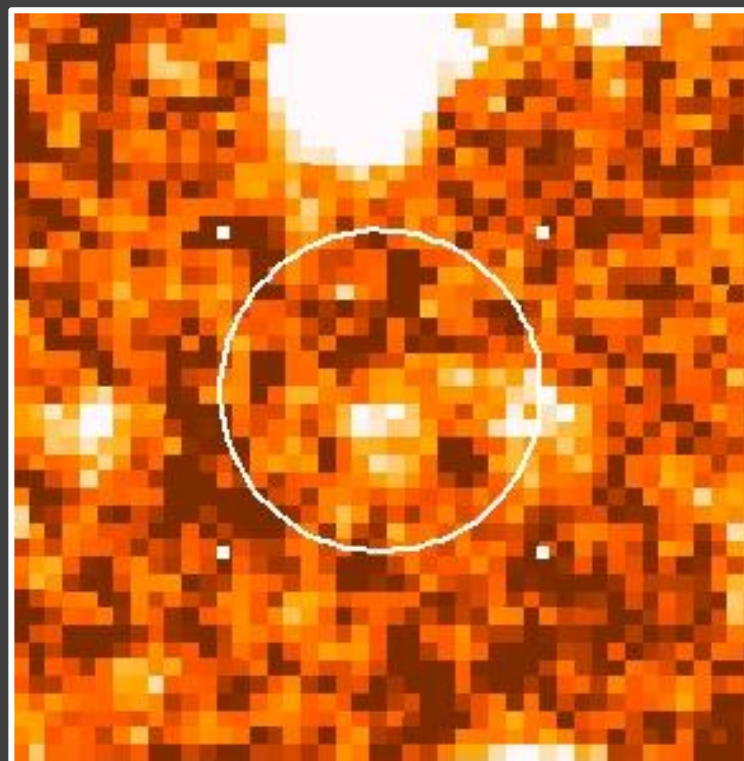
IRAC 3.6μm



IRAC 4.5μm



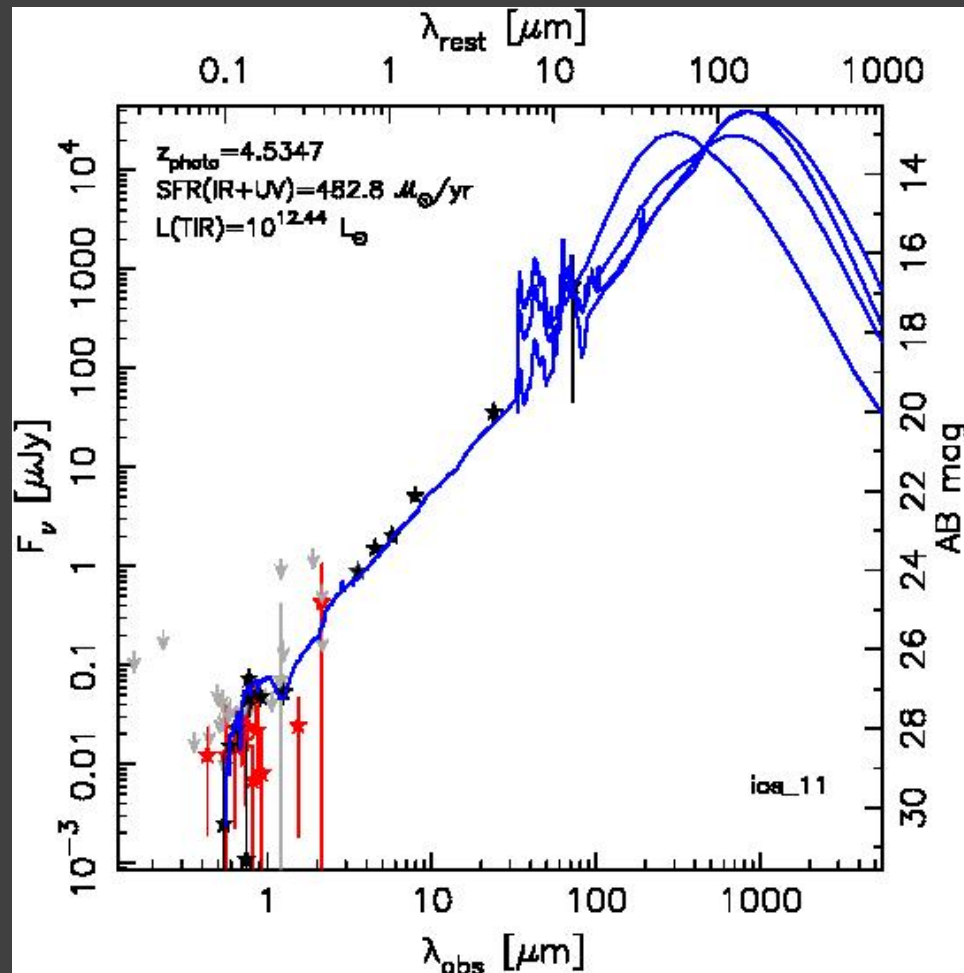
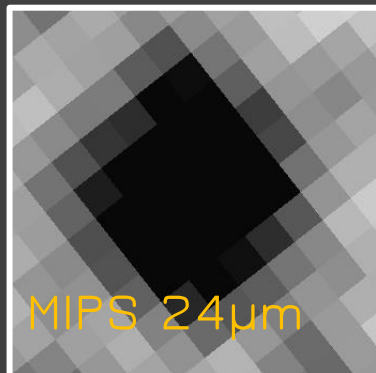
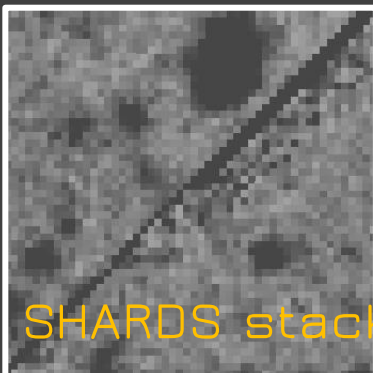
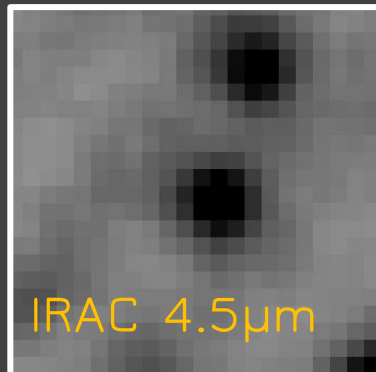
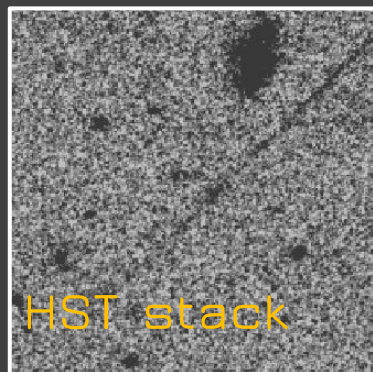
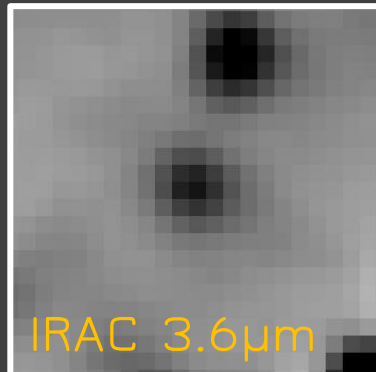
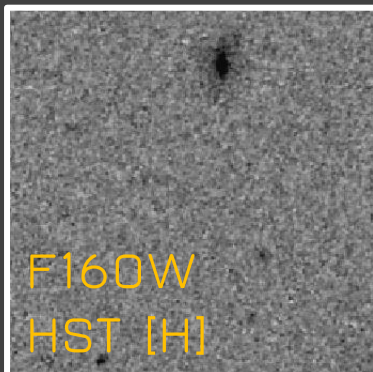
HST STACK 80%



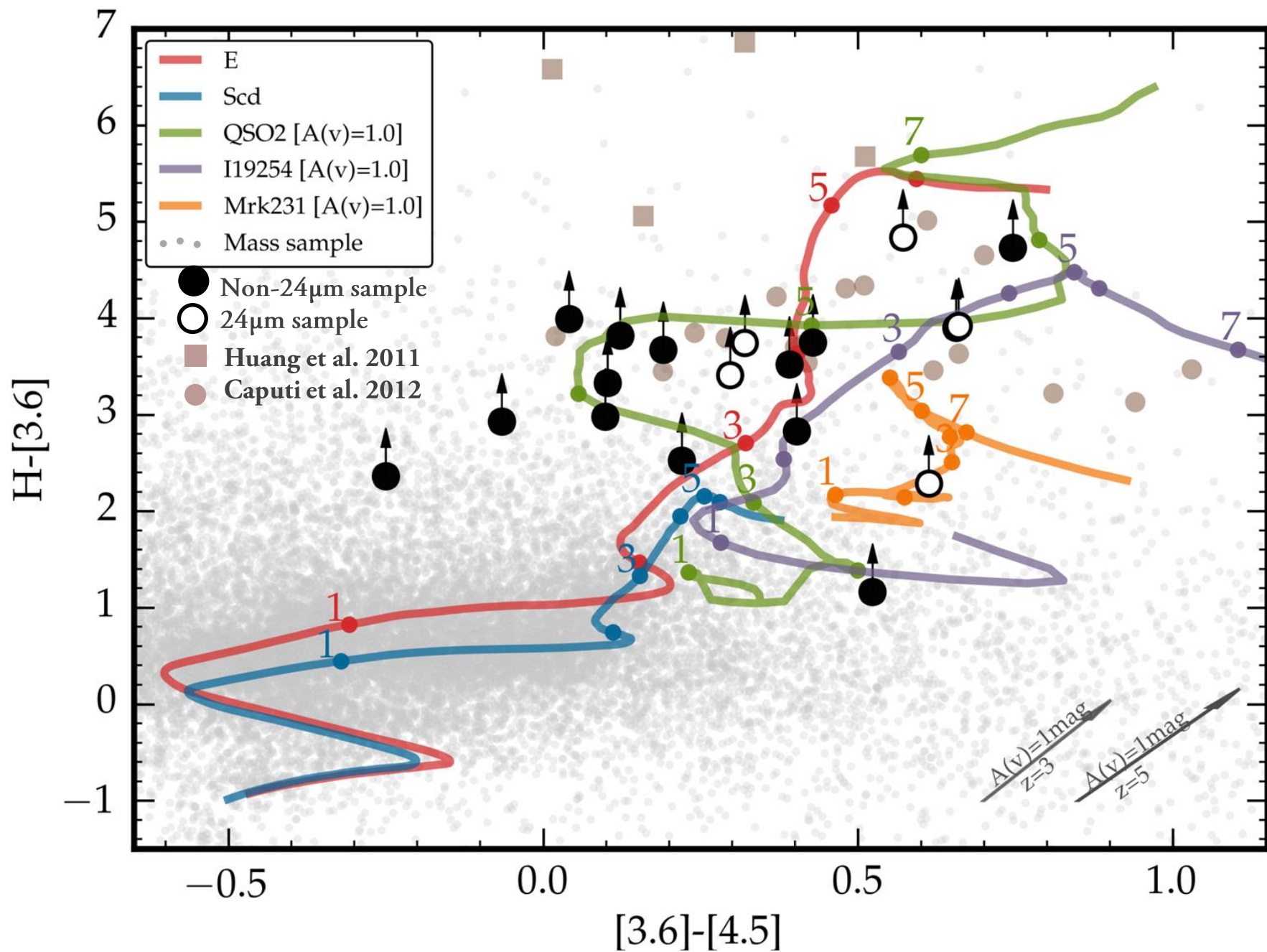
SHARDS STACK 50%

# Search for counterparts

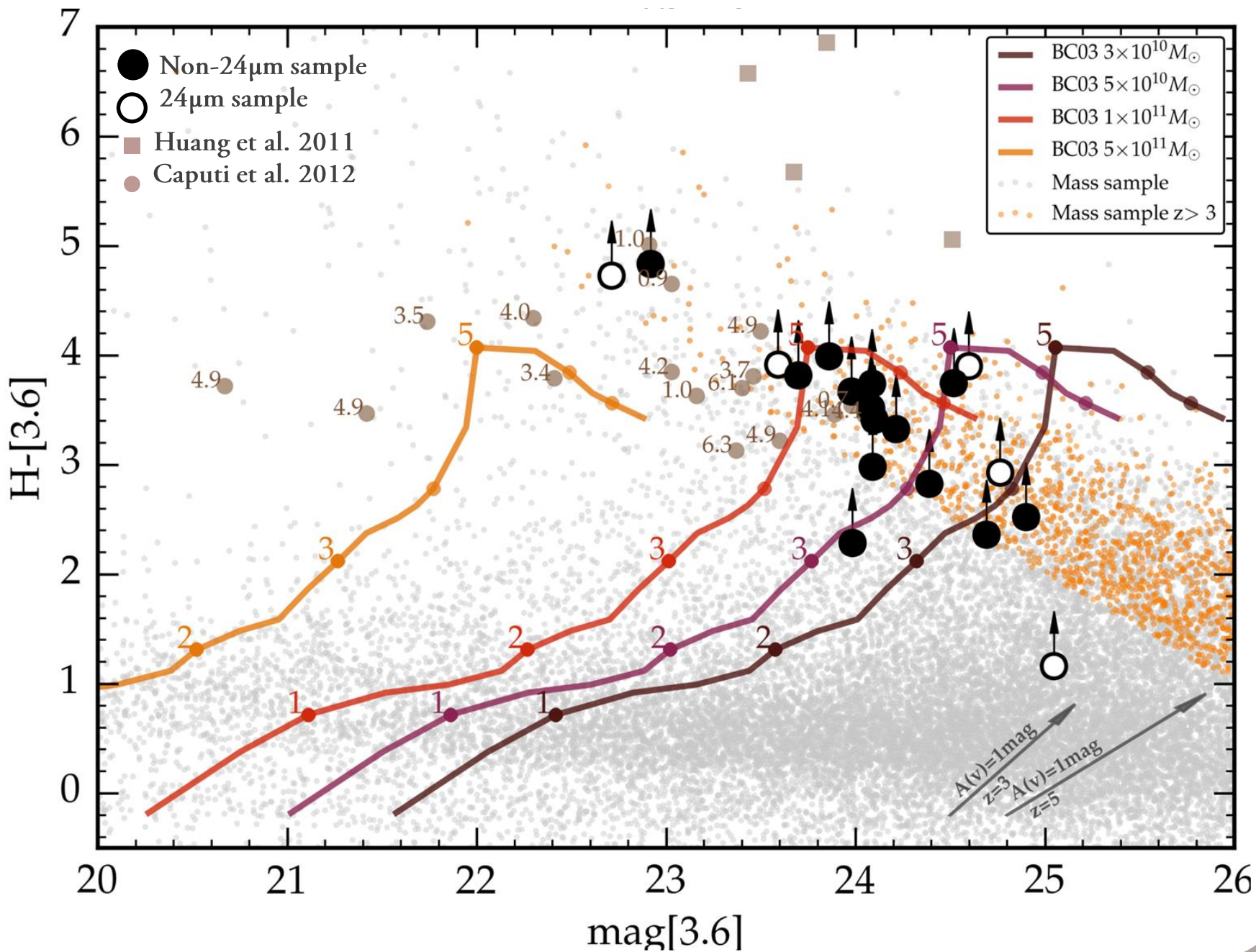
SED fitting



# Nature of IRAC only sources



# Nature of IRAC only sources





# Conclusions & future work

They DO exist &  
we are able to identify them

We identify 19 IRAC Only sources  
Obscured SF galaxies  
Old & dead galaxies

... improve and finalize the  
characterization of the sample

... LBGs

...LAEs

Thanks!



# Future work ...



**PhD!**

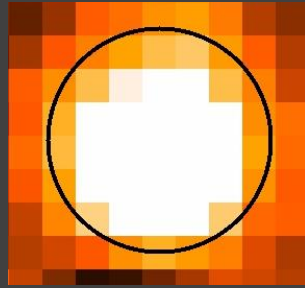
type type type [save]  
type type [save]  
type [save]



# Nature of IRAC only sources

Search for counterparts

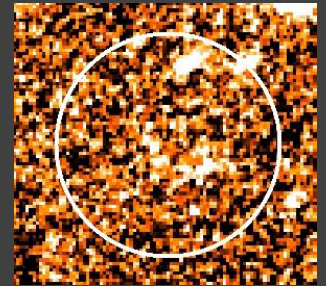
\* Only IRAC



Centroid + offset

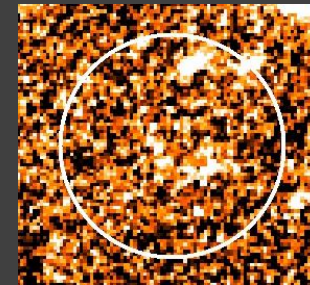
\* HST  
80%

Recentre + centroid

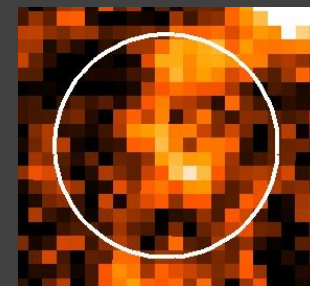


\* HST & SHARDS  
50%

Recentre +



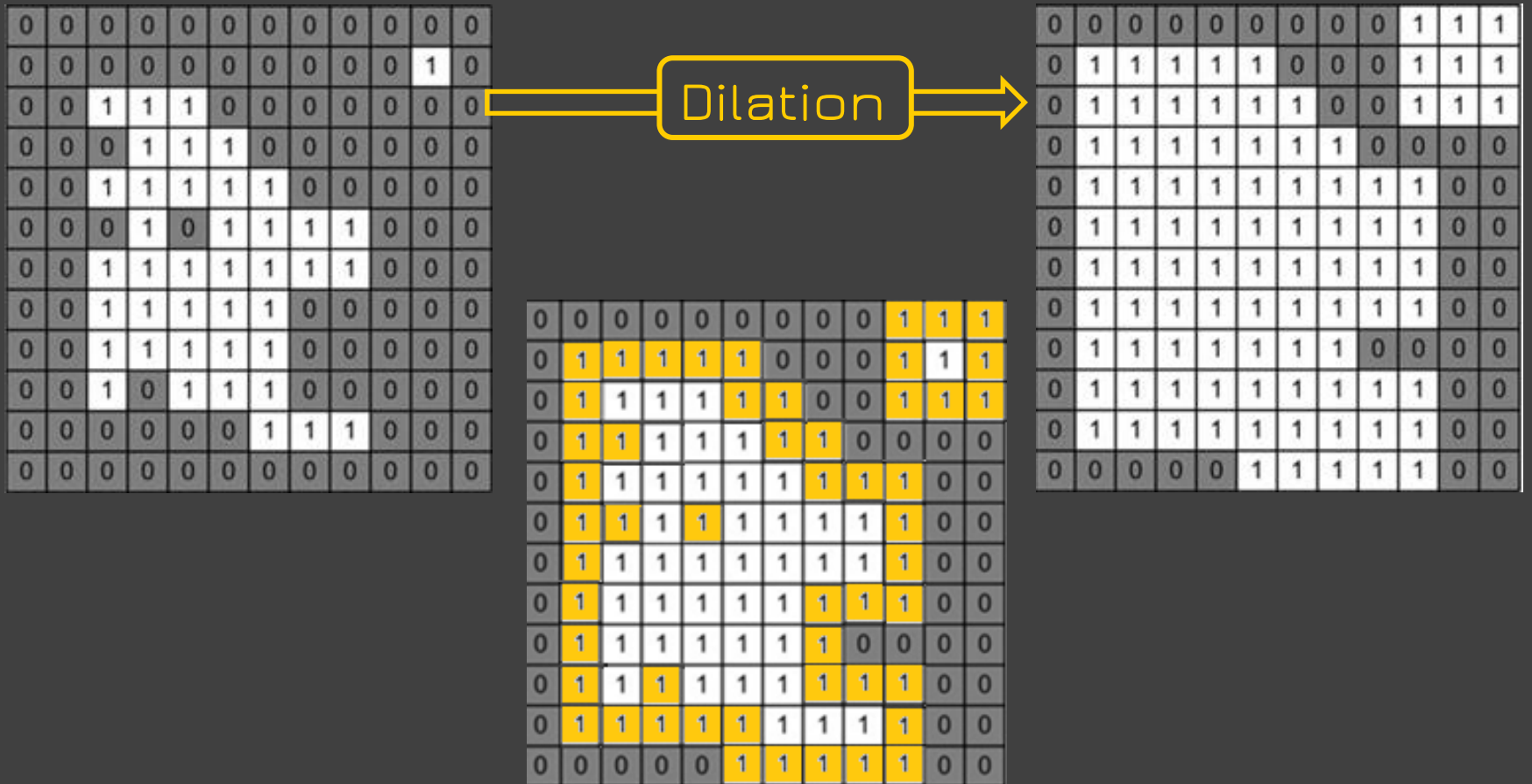
Centroid  
HST



Centroid  
SHARDS

+ median

# Selection process: wings



Pixel value - outline median + background + noise

Future work ...

